



EWART

- SINCE 1879 -

SUGAR INDUSTRY CHAIN

BROCHURE

CHAIRMAN'S MESSAGE

In over 100 Countries worldwide the brand name EWART has been synonymous for high quality power transmission, conveying and elevator chains.

Wherever such chains are utilised, EWART are likely to be the standard to which other manufacturers aspire.

EWART was formed in 1879 in Derby in the UK, and has designed and manufactured chains for over 140 years.

The Sugar Industry has been the mainstay of our business over these years and today, is still the brand name customers seek when purchasing chains.

Our team of Sugar Industry Engineers have many years of experience working and living at factories, and travelling around the world. They appreciate the many issues that varied working conditions can have on our chains and their applications.

Recent times have been difficult for the Industry as weather pattern changes, material and energy cost increases, and the effects of Covid-19 on production and shipping timescales have had a marked effect on all the Industry and its supplies.

I thank our regular customers for the loyalty given to EWART and hope that we can grow our business with our many historical customers who appreciate that our technical support and commercial services have always been first class.

I would also like to thank our many agents around the world who have always visited and supported our customers with the same commitment as Ewart Head Office. Many of these have represented the brand for over 50 years.

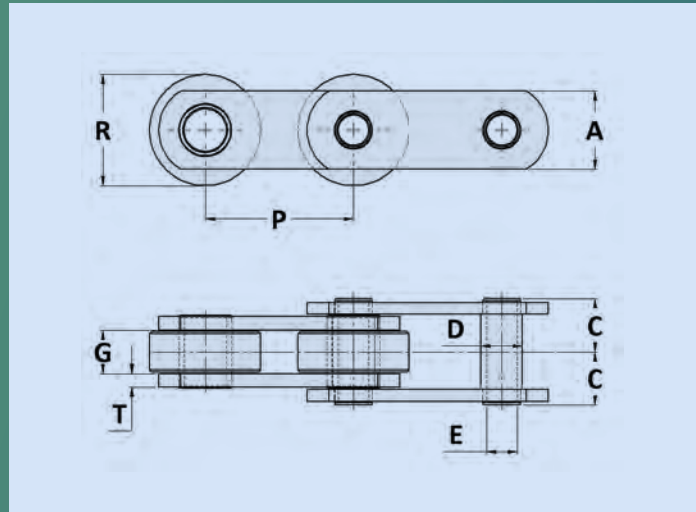
CONTENTS

Cane field chains	4
Drive chains	5 - 6
Cane feeder & washing table chains	7 - 17
Main & auxiliary cane carrier chains	18 - 25
Intermediate carrier roller chains	26 - 37
Bagasse elevator & conveyor chains	38 - 42
Juice strainer (cush-cush) chains	43
Trash conveyor chains	44
Slats & sprockets	45 - 46
Sugar elevator chains	47 - 59
Boiler Chains	60 - 61



CANE FIELD CHAINS

Ewart offers a variety of chains for use in the harvesting of cane. Numerous types of roller and double pitch roller chains are available. The Hollow Pin Type Chain is shown.

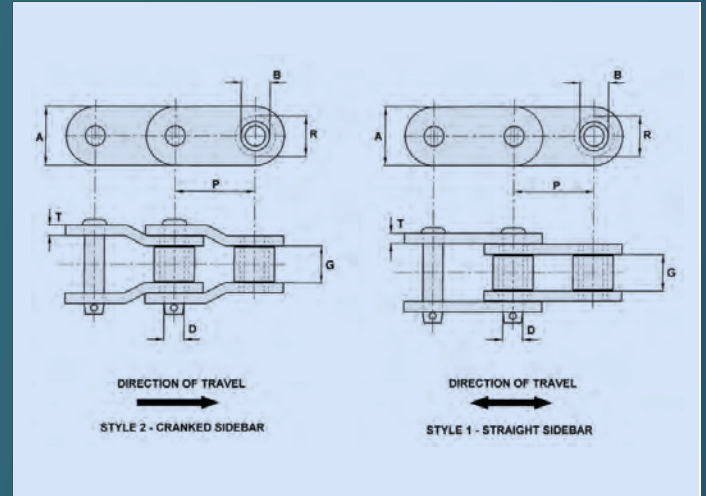
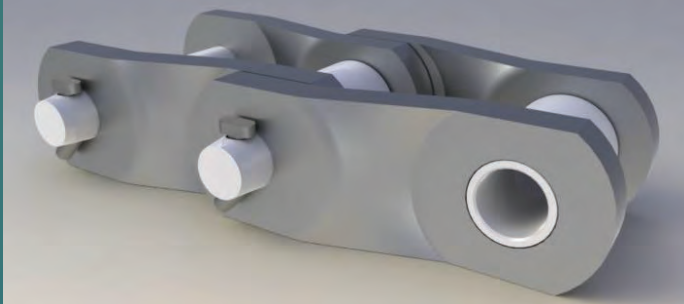


CHAIN No.	Pitch	Allow Load	UTS LBS	Links in 10ft	Weight Lbs./ft	Sidebar Depth				Max Gearing	Roller Diameter	
						A	C	D	E		G	R
SS2038	2,500	3,400	21,000	48	10.1	1.75	0.94	0.992	0.765	0.813	1.56	0.19
EHP200	2	2,600	12,000	60	3.2	1.06	0.72	0.56	0.41	0.59	1.5	0.16

DRIVE CHAINS



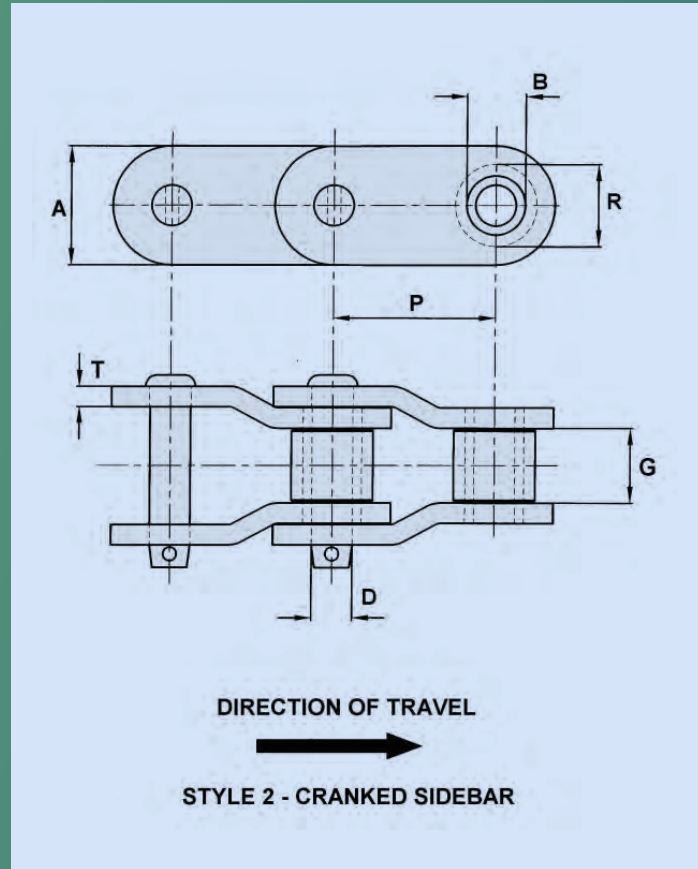
Ewart Sugar Drive Chains are of an all-steel construction, built for operation under exposed conditions, where dirt, oil and corrosion are present.



CHAIN No.	Pitch	Allow Load	UTS	Pin Diameter	Roller Diameter	Sidebar Depth	Sidebar Thickness	Maximum Gearing	Bush Diameter	Chain Weight Lbs./ft	Chain Style
	P			D	R	A	T	G	B		
EXS2065	2	3890	65000	0.59	1.13	1.63	0.31	1.25	0.87	7.6	2
2500X	2.5	5190	68000	0.62	1.25	1.63	0.31	1.5	0.91	8.8	2
64S	2.5	7500	115000	0.88	1.56	2.38	0.38	1.53	1.21	12.8	1
EXS882	2.609	2500	28000	0.44	0.87	1.13	0.25	1.13	0.64	3.6	2
EXS402	3.075	4650	48000	0.62	1.25	1.5	0.31	1.5	0.88	7.4	2
API3P	3.075	5100	75000	0.65	1.25	1.56	0.38	1.5	0.91	8.6	2
1190EXX	3.075	5100	100000	0.65	1.25	1.75	0.38	1.5	0.91	8.3	2
3012	3.067	6000	110000	0.75	1.63	2.25	0.38	1.56	1.13	13.9	2
3067X	3.067	6000	110000	0.75	1.63	2	0.38	1.58	1.13	12	2
2512 #	3.067	6410	115000	0.75	-	2.13	0.38	1.5	1.25	11	2
B7811	3.075	5100	100000	0.65	1.25	1.75	0.38	1.5	0.91	8.3	2
E3114	3.09	7650	140000	0.88	1.75	2.25	0.5	1.5	1.25	17.5	2
E238R	3.5	7650	150000	0.88	1.75	2.25	0.5	1.5	1.25	16	2
3514	3.5	7650	150000	0.88	1.75	2.25	0.5	1.5	1.25	16.7	2
1664A	4	14700	250000	1.19	2.25	3.25	0.56	2.19	1.63	28.6	2
API4P	4.063	9000	150000	0.88	1.75	2.25	0.5	2	1.25	15.7	2
4014	4.063	9000	150000	0.88	1.75	2.25	0.5	2	1.25	15.7	2
RX1245	4.073	10050	170000	0.94	1.78	2.38	0.56	1.94	1.31	18.7	2
4015A	4.073	10050	170000	0.94	1.78	2.38	0.56	1.94	1.31	18.7	2
E4073	4.073	11500	170000	1	1.78	2.38	0.56	1.94	1.31	18.7	2
4016	4.09	11500	170000	1	1.87	2.75	0.56	1.94	1.31	22.6	2
4016LR	4.09	11500	170000	1	2	2.75	0.56	1.94	1.31	23.3	2
4500A	4.5	12200	208000	1.09	2.25	3	0.56	2.06	1.63	24.5	2
EXS5026	5	16130	260000	1.25	2.5	3.25	0.56	2.56	1.88	31.1	2
5020	5	17500	260000	1.25	2.5	3.5	0.56	2.75	1.88	35.1	2
EXS5027	5	17500	260000	1.25	2.5	3.25	0.63	2.75	1.88	35.1	2
1605AAA	5	21000	330000	1.38	2.5	3.5	0.75	2.56	1.88	39.8	2
5022	5	21000	330000	1.38	2.5	3.5	0.75	2.56	1.88	39.8	2
E1605	5	22200	330000	1.38	2.5	3.5	0.75	2.75	1.88	40.3	2
EXS5042	5	23700	420000	1.5	3	4	0.75	3	2.25	51.6	1
5500A	5.5	23625	400000	1.5	3	4	0.75	3	2.25	49.8	2
5524	5.5	23700	420000	1.5	3	4	0.75	3	2.25	49.8	2
6024	6	23700	420000	1.5	3	4	0.75	3	2.25	46.4	2
EXS6042	6	23700	420000	1.5	3	4	0.75	3	2.25	46.4	2

PRESSURE FEEDER CHAINS

These chains have specially treated components to suit this application.



CHAIN No.	Pitch	Allow Load	UTS	Pin Diameter	Roller Diameter	Sidebar Depth	Sidebar Thickness	Maximum Gearing	Bush Diameter	Chain Weight Lbs./ft	Chain Style
	P			D	R	A	T	G	B		
API4P	4.063	9000	150000	0.88	1.75	2.25	0.5	2	1.25	15.7	2
4500A	4.5	12200	208000	1.09	2.25	3	0.56	2.06	1.63	24.5	2
1605AAA	5	21000	330000	1.38	2.5	3.5	0.75	2.56	1.88	39.8	2
E1605	5	22200	330000	1.38	2.5	3.5	0.75	2.75	1.88	40.3	2
EXS6042	6	23700	420000	1.5	3	4	0.75	3	2.25	46.4	2
6042X	6	23700	420000	1.5	3	4	0.81	3	2.25	49.1	2
6060	6	40000	600000	1.88	3.5	4.5	0.88	4	2.63	66	2

CANE FEEDER & WASHING TABLE CHAINS

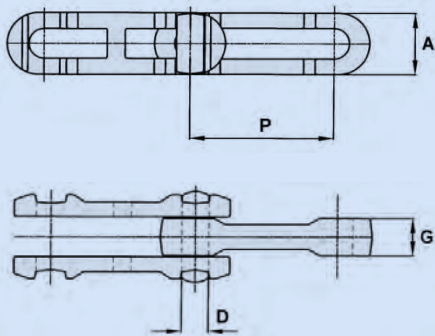
DROP FORGED CHAINS

Drop Forged Chains are used for feeder tables and in cane washing stations. These chains are of simple construction and require no tools for assembly or disassembly.

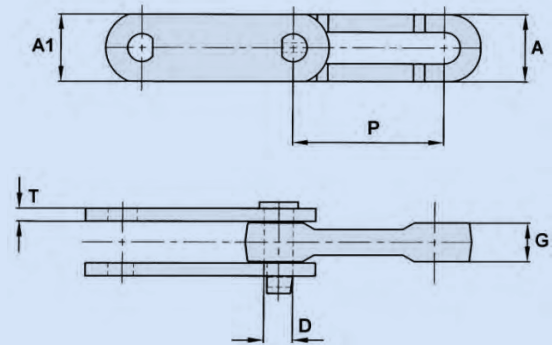
The chain can be turned over to provide new sliding surfaces after the original side has worn, Forged double 'T' head pins provide positive locking action in the sidebars. Additionally, when worn, the pin can be rotated 180° putting the unworn pin surfaces in contact with the sidebar and centre link. This partially restores the original pitch, thereby increasing the effective life of the chain.



FORGED RIVETLESS



BAR LINK



FORGED RIVETLESS

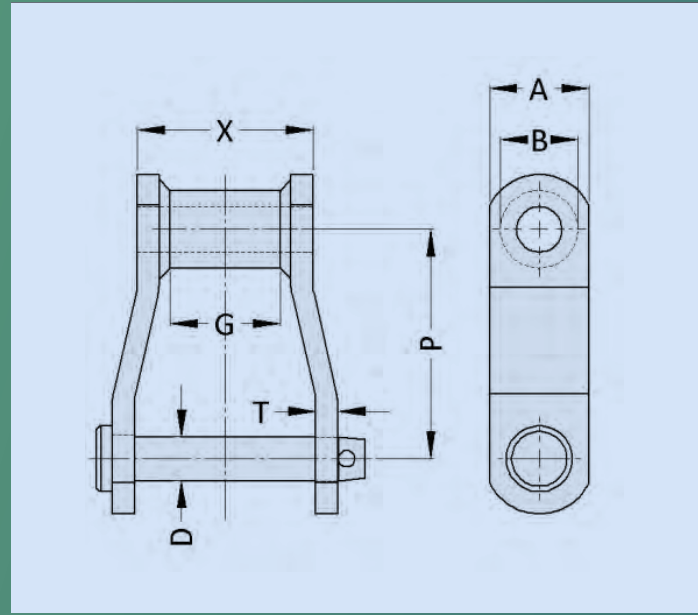
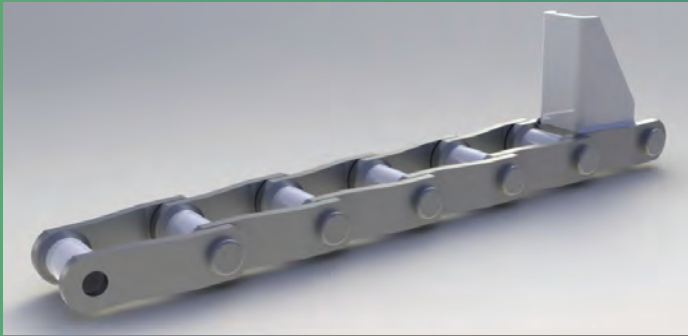
CHAIN No.	Pitch	Allow Load (LBS)	Breaking Load (LBS)	Weight Lbs./ft	Maximum Gearing		
					D	G	A
348	3.015	2400	24000	2.2	0.5	0.75	1.06
458	4.031	3000	48000	3.2	0.625	1.01	1.375
468	4.031	7000	68000	7.5	0.75	1.81	1.88
678	6.031	8500	85000	6.7	0.875	1.29	2
698	6.031	13000	136000	11.4	1.1	1.55	2.53
698HDX	6.031	13000	200000	12.2	1.1	1.55	2.69
998	9.031	13000	136000	9	1.1	1.53	2.66
9118	9.031	25000	220000	16	1.38	2	3.12

BAR LINK

CHAIN No.	Pitch	Allow Load (LBS)	UTS	Pin Dia.	Inner Side Depth	Outside Depth	Maximum Gearing	
							G	T
S3699	6.031	6000	130000	1.12	2.5	2.88	1.56	0.5
B5283	6.031	6400	136000	1.12	2.5	2.69	1.63	0.5

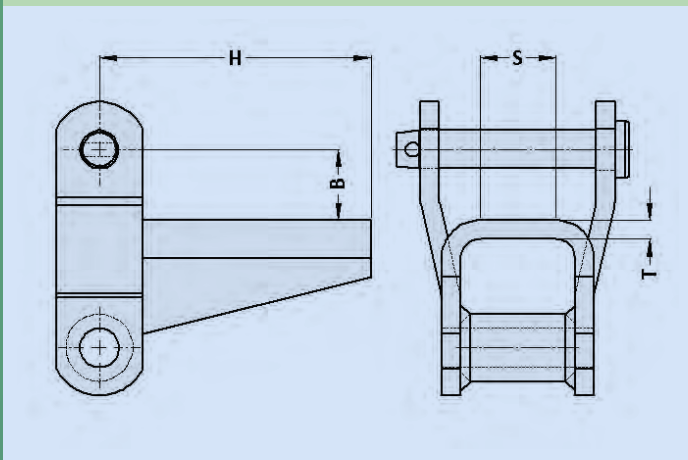
WELDED STEEL CHAINS

Welded Steel Chains provide dependable operation with long wear life, the ability to accept shock loads and freedom from high maintenance costs. They provide great flexibility to Sugar Mill users since attachments can be welded easily on site.

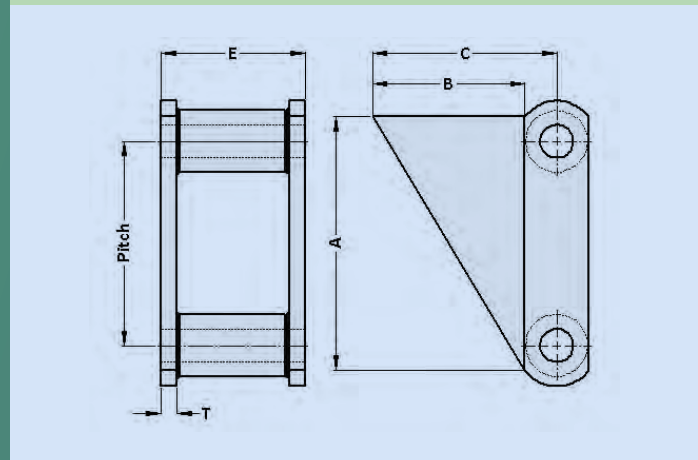


CHAIN No.	Avg. Pitch Inches	Rated Wkg. Load Lbs	Links Per 10 Feet	Avg. Wt. Per Foot Lbs	Length of Bearing	Rivet Diameter	Sidebar Thickness	Side Bar Width	Barrel Diameter	Maximum Gearing
	P				X	D	T	A	B	G
WH78	2.609	3500	46	4	2	0.5	0.25	1.13	0.875	1.13
WH82	3.075	4400	39	4.8	2.25	0.563	0.25	1.25	1.063	1.25
WH124	4	7350	30	8.3	2.75	0.75	0.38	1.5	1.75	1.5
WH111	4.76	8850	25	9.5	3.88	0.75	0.38	1.75	1.25	2
WH132	6.05	15300	20	14.2	4.38	1	0.5	2	1.63	2.75

H1 ATTACHMENT



S1 ATTACHMENT



H1 ATTACHMENT

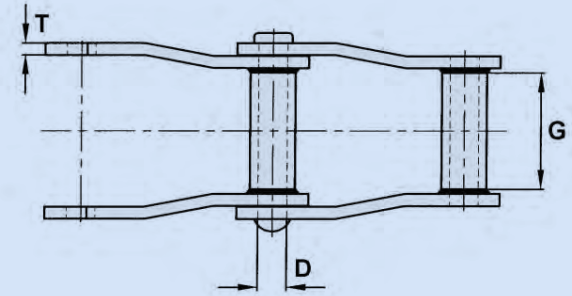
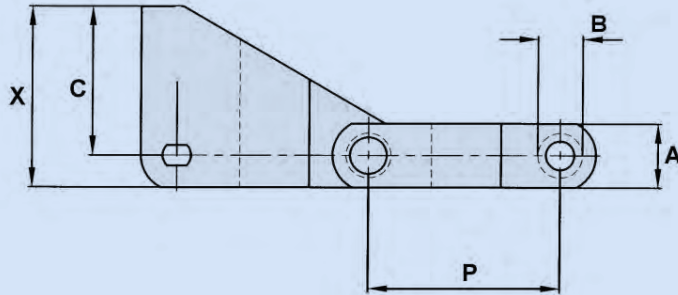
CHAIN	S	H	B	T	App. Weight Per Attachment
WH78	1.5	3.63	0.5	0.19	1.0 lbs
WH82	1.75	3.63	0.5	0.19	1.1 lbs

S1 ATTACHMENT

CHAIN	A	B	C	E	T	App. Weight Per Attachment
WH124	5.13	3	3.75	2.75	0.38	1.6 lbs
WH132	7.5	4.5	5.5	4.38	0.5	2.7 lbs

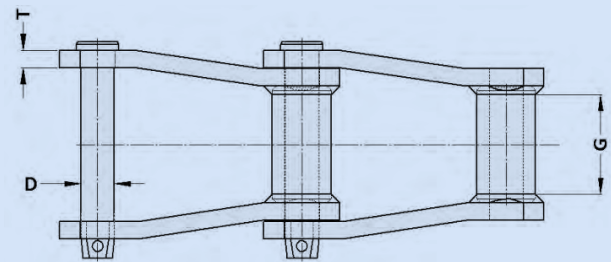
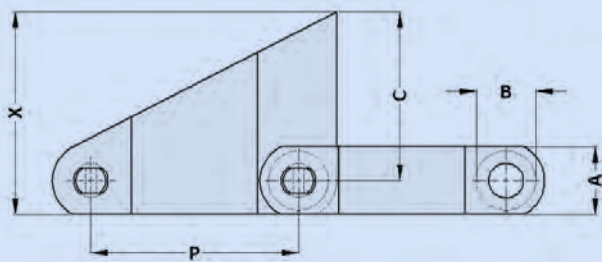
VARIOUS ALTERNATE TYPES OF ATTACHMENT ARE AVAILABLE ON REQUEST

WELDED STEEL CHAINS - S1 ATTACHMENT



Can be supplied as a separate welded on piece to standard sidebar.

CHAIN No.	Pitch	Allow. Load	UTS	Pin Diameter	Sidebar Depth	Maximum Gearing	Bush Diameter	C	X
	P			D	A	G	B		
WH124	4	6200	47000	0.75	1.5	1.5	1.25	3.25	4
WH132	6.05	13000	100000	1	2	2.88	1.75	5	6

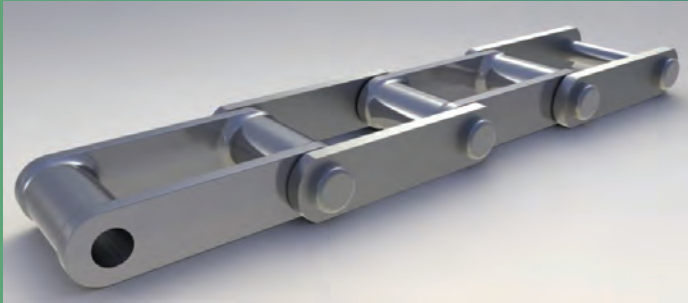


CHAIN No.	Pitch	Allow. Load	UTS	Pin Diameter	Sidebar Depth	Maximum Gearing	Bush Diameter	C	X
	P			D	A	G	B		
WH132	6.05	13000	100000	1	2	2.88	1.75	5	6

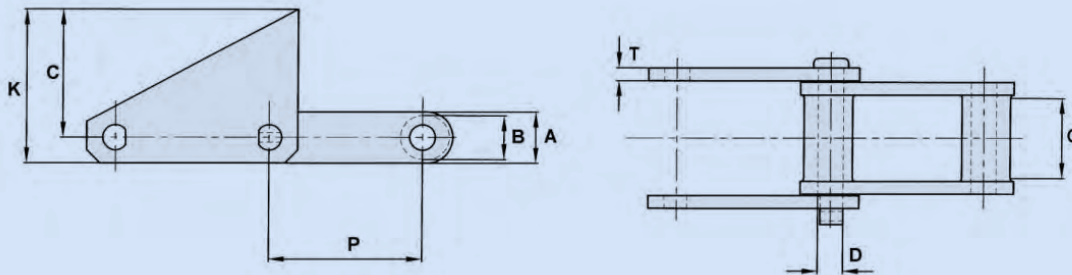
A NUMBER OF ADDITIONAL ATTACHMENTS ARE AVAILABLE ON REQUEST INCLUDING THE A22 / A42 LUG TYPE ATTACHMENT.

COMBINATION CHAINS

Combination Type Chains have cast block links alternating with steel sidebars. This configuration provides an ideal compromise between strength, stability and price.



S1 ATTACHMENTS



CHAIN No.	Pitch Inch	Allowable Chain Pull (Lbs)	Breaking Load		Plain Weight Lb/Ft	A	B	C	D	G	K	T
			LB	KGF								
C131	3.07	3220	27500	12400		1.5	1.25	3.25	0.62	1.13	4	0.38
C102B	4	4200	27500	12485	7.5	1.5	1	3.75	0.625	1.75	4.5	0.38
C110	6	4200	27500	12485	6.5	1.5	1.25	4.25	0.625	1.75	5	0.375
C111	4.76	6000	36000	16344	9.8	1.75	1.438	4.38	0.75	2.25	5.25	0.375
C132	6.05	10000	60000	27240	14.5	2	1.72	5	1	2.88	6	0.5
C132	6.05	10000	60000	27240	14.5	2	1.72	8	1	2.88	9	0.5
C132	6.05	10000	60000	27240	14.5	2	1.72	10	1	2.88	11	0.5

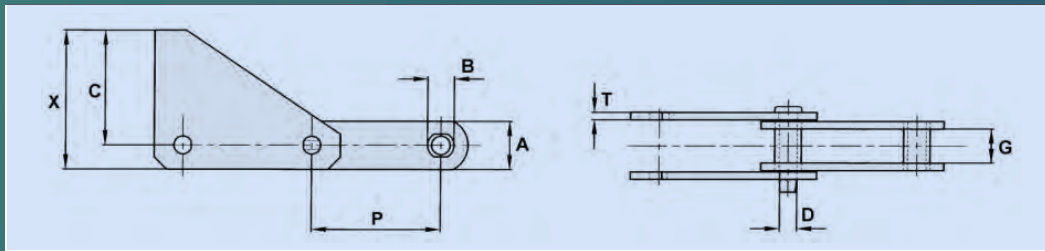
ATTACHMENT DATA

S1 attachments are one piece sides flame cut to close limits to ensure maximum strength and accuracy. Standard practice is to supply these in pairs but single S1's can be supplied. K2 attachments maybe used in this application and are available on request.

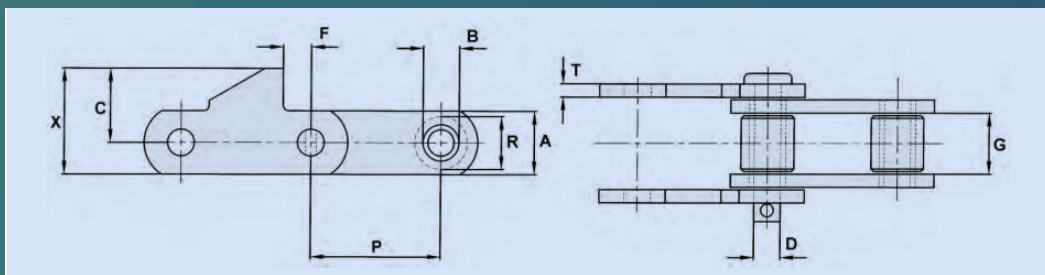
ECCENTRIC BARRELS

The above Ewart Combination Chains have eccentric barrels. The extra thickness occurs on the pitch line at the outer ends of the centre link. This ensures the leading barrel is clear of the sprocket tooth face. The elimination of severe sliding contact under heavy pressure reduces the extent of the wear, to which, block links of symmetrical barrel design are prone.

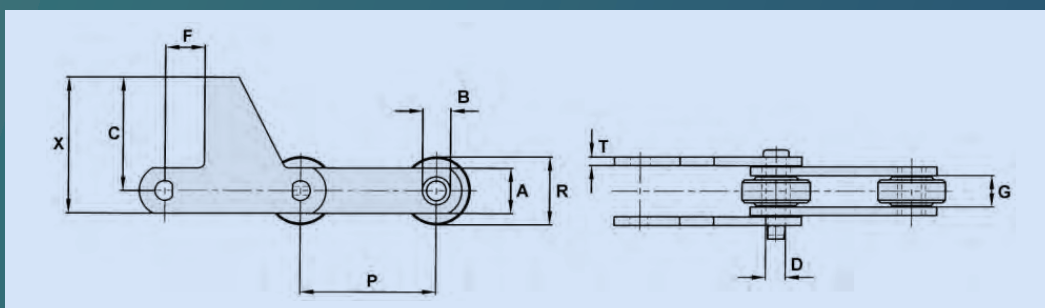
STEEL CHAINS PUSHER TYPE



CHAIN No.	Pitch	Allow Load	UTS	Pin Diameter	Sidebar Depth	Maximum Gearing	Bush Diameter	C	T	X
	P			D	A	G	B			
S82	3.075	4300	35000	0.62	1.5	1.37	1.19	5.19	0.25	5.94
SS102B	4	6300	40000	0.62	1.5	2.13	1	3.75	0.38	4.5
SS110	6	6300	40000	0.62	1.5	2.13	1.25	4.25	0.38	5.5
B5298	6	6550	90000	0.75	2.38	1.55	1.38	5	0.38	6.19
B5143	135MM	5575	55000	0.75	2	1.5	1.1	4.88	0.31	5.88

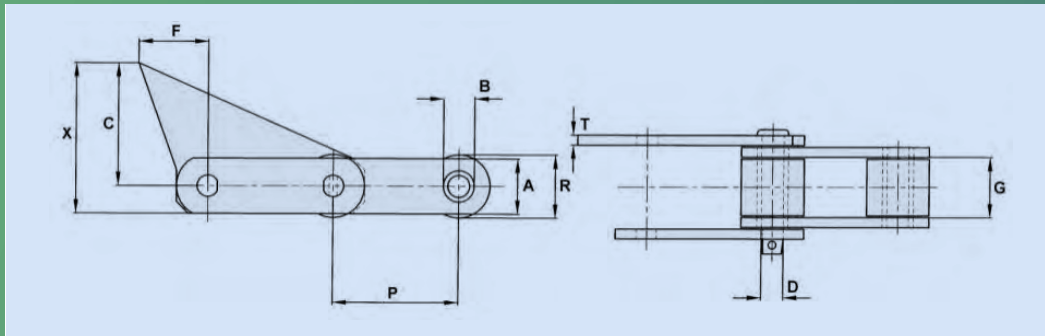


CHAIN No.	Pitch	Allow Load	UTS	Pin Diameter	Roller Diameter	Sidebar Depth	Maximum Gearing	Bush Diameter	C	F	T	X
	P			D	R	A	G	B				
SS39	3.075	4650	48000	0.62	1.25	1.5	1.5	0.88	1.75	0.66	0.31	2.5

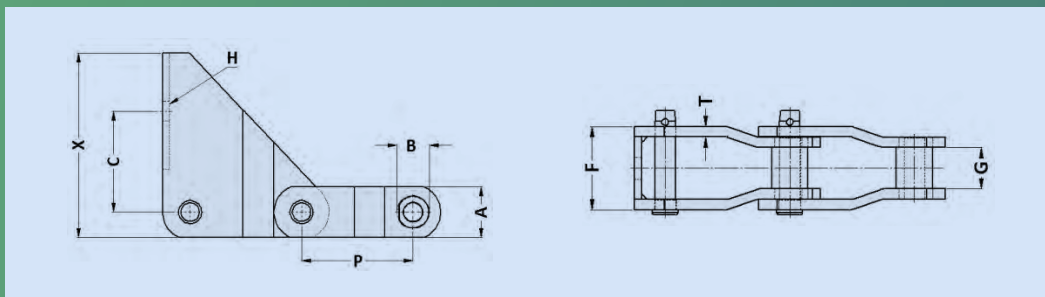


CHAIN No.	Pitch	Allow Load	UTS	Pin Diameter	Roller Depth	Sidebar Diameter	Maximum Gearing	Bush Diameter	C	F	T	X
	P			D	R	A	G	B				
B5296	6	7400	90000	0.88	2.75	2	1.5	1.25	5	1.75	0.38	6

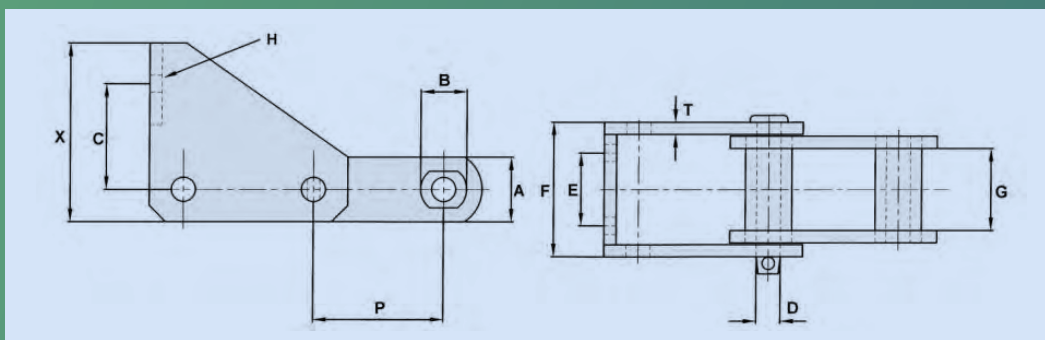
STEEL CHAINS PUSHER TYPE



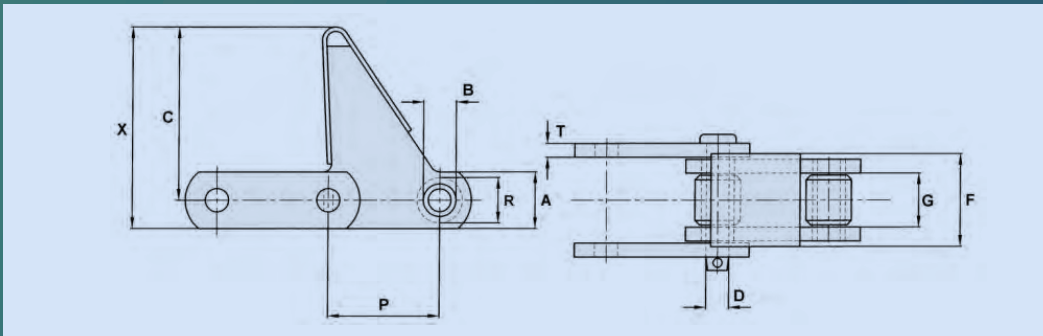
CHAIN No.	Pitch	Allow Load	UTS	Pin Diameter	Roller Diameter	Sidebar Depth	Maximum Gearing	Bush Diameter	C	F	T	X
	P			D	R	A	G	B				
B5070	4	6300	40000	0.69	2.75	2	2	1	3.88	2.23	0.25	4.88



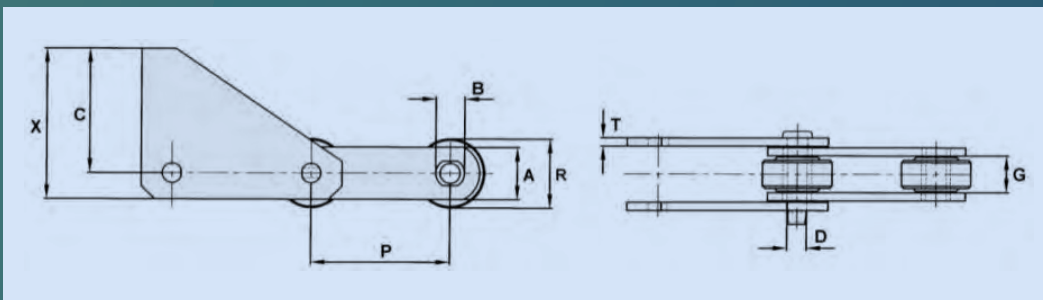
CHAIN No.	Pitch	Allow Load	UTS	Pin Diameter	Sidebar Depth	Maximum Gearing	Bush Diameter	C	F	Bolt Diameter	T	X
	P			D	A	G	B			H		
B5333	6.05	10000	160000	1	2.75	2	1.75	5.48	4.03	1.06	0.5	10



CHAIN No.	Pitch	Allow Load	UTS	Pin Diameter	Sidebar Depth	Maximum Gearing	Bush Diameter	C	E	F	Bolt Diameter	T	X
	P			D	A	G	B				H		
B5099	4	9500	75000	0.75	2	2.62	1.44	3.25	2.25	4.16	0.5	0.38	5.5

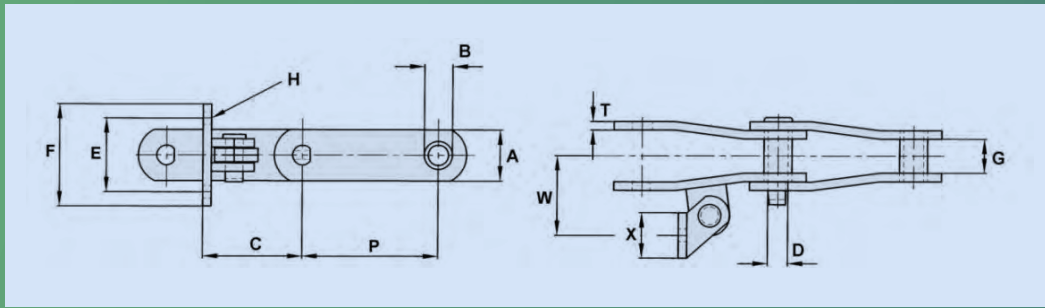


CHAIN No.	Pitch	Allow Load	UTS	Pin Diameter	Roller Diameter	Sidebar Depth	Maximum Gearing	Bush Diameter	C	F	T	X
	P			D	R	A	G	B				
B5047	3.075	5100	70500	0.65	1.25	1.56	1.5	0.91	4.75	2.56	0.38	5.53

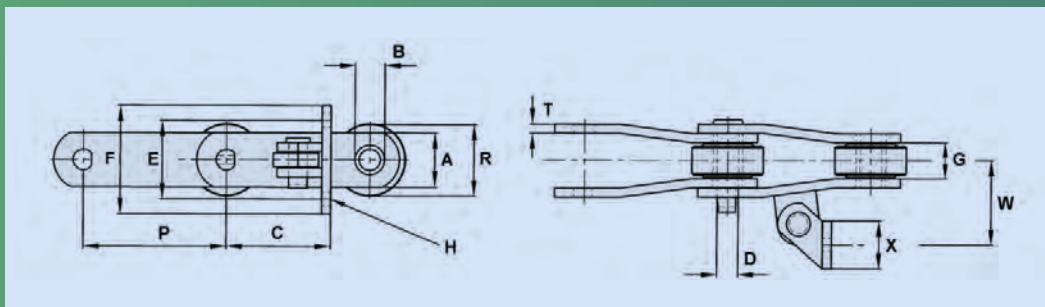


CHAIN No.	Pitch	Allow Load	UTS	Pin Diameter	Roller Diameter	Sidebar Depth	Maximum Gearing	Bush Diameter	C	T	X
	P			D	R	A	G	B			
B5191	150MM	6200	82500	0.88	66mm	2.19	1.25	1.25	3.5	0.31	4.59
SC132	6	10000	100000	1	49mm	2	3.37	1.34	5.51	0.5	6.51

STEEL CHAINS - AS2 TYPE

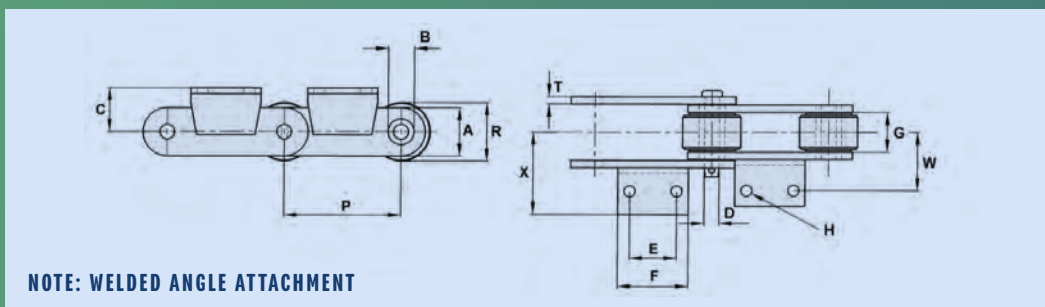


CHAIN No.	Pitch	Allow Load	UTS	Pin Dia.	Sidebar Depth	Max Gearing	Bush Dia.	C	E	F	Bolt Dia.	T	W	X
	P			D	A	G	B				H			
B5111	4.76	8860	75000	0.75	2	2.62	1.44	4.76	3.5	5	0.5	0.38	4	2



CHAIN No.	Pitch	Allow Load	UTS	Pin Dia.	Roller Dia.	Sidebar Depth	Max Gearing	Bush Dia.	C	E	F	Bolt Dia.	T	W	X
	P			D	R	A	G	B				H			
B5276	6.05	5900	60000	0.75	2.63	2	1.38	1	4.4	3.25	4.5	0.5	0.38	3.38	2

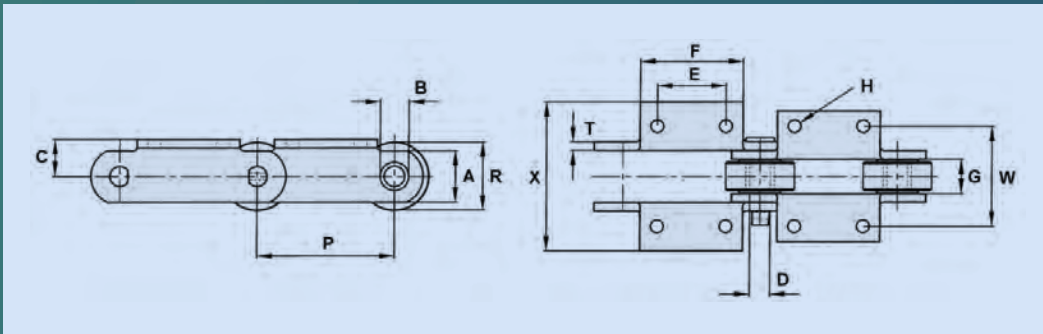
STEEL CHAINS - A2 TYPE



NOTE: WELDED ANGLE ATTACHMENT

CHAIN No.	Pitch	Allow Load	UTS	Pin Dia.	Roller Dia.	Sidebar Depth	Max Gearing	Bush Dia.	C	E	F	Bolt Dia.	T	W	X
	P			D	R	A	G	B				H			
6022	6	3875	22000	0.56	65mm	1.5	1.31	0.92	2.44	2	80mm	0.38	0.25	52mm	80mm

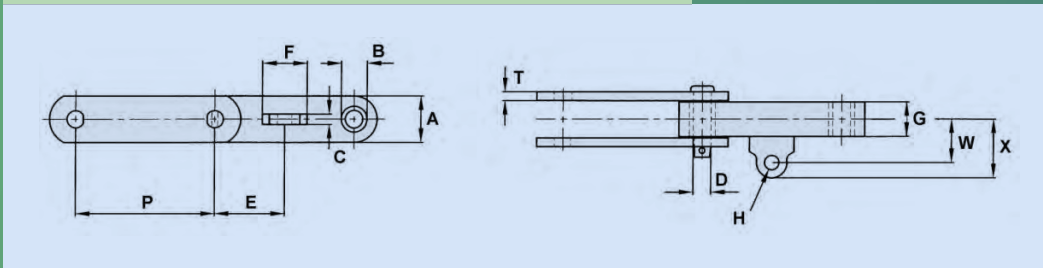
STEEL CHAINS - K2 SLAT TYPE FEED TABLES



CHAIN No.	Pitch	Allow Load	UTS	Pin Dia.	Roller Dia.	Sidebar Depth	Max Gearing	Bush Dia.	C	E	F	Bolt Dia.	T	W	X
	P			D	R	A	G	B				H			
904	4	4850	40000	0.69	2	1.75	1.22	1	1.25	1.44	2.63	0.38	0.31	3.5	4.13
9060	6	6350	60000	0.75	2.75	2	1.5	1.13	1.63	3	4.5	0.5	0.38	4.38	6.75
9061	6	6350	85000	0.75	2.75	2.25	1.5	1.13	1.63	3	4.5	0.5	0.38	4.38	6.5
1796	6	7500	100000	0.87	2.75	2.25	1.5	1.25	1.63	3	4.5	0.5	0.38	4.38	6.5
SS2198	6	7650	100000	0.87	2.75	2.25	1.5	1.25	1.63	3	4.5	0.5	0.5	4.38	5.94
9063	6	8300	140000	0.94	3	2.38	1.5	1.25	1.75	3	4.5	0.5	0.41	4.38	6.5

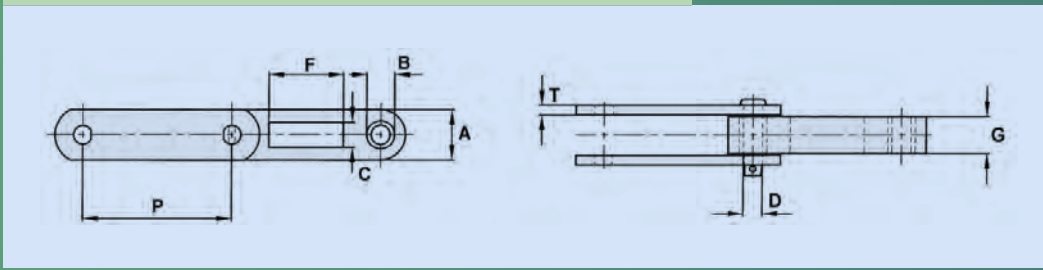
BLOCK LINK CHAINS

LUG ONLY ATTACHMENT



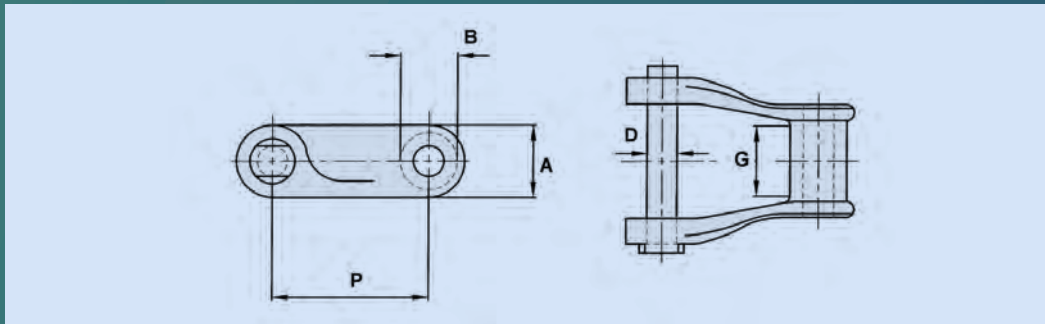
CHAIN No.	Pitch	Allow Load	UTS	Pin Dia.	Sidebar Depth	Max Gearing	Bush Dia.	C	E	F	Bolt Dia.	T	W	X
	P			D	A	G	B				H			
E30200	200mm	2850	90000	0.75	1.75	1	1.12	15mm	100mm	65mm	20mm	0.31	2	2.88

SLOTTED CENTRE



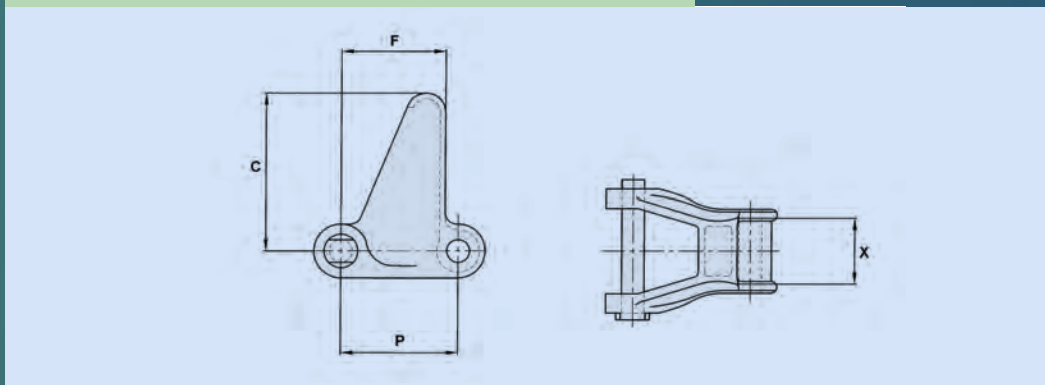
CHAIN No.	Pitch	Allow Load	UTS	Pin Diameter	Sidebar Depth	Maximum Gearing	Bush Diameter	C	F	T
	P			D	A	G	B			
BLO9060	6	4400	60000	0.75	2	40mm	1.12	28mm	75mm	0.38
BLO9063	6	7200	140000	0.94	2.38	55mm	1.25	29mm	73.5mm	0.41

H CLASS PINTLE CHAINS



CHAIN No.	Pitch	Allow Load	UTS	Pin Diameter	Sidebar Depth	Maximum Gearing	Bush Diameter
	P			D	A	G	B
H78	2.609	2380	16000	0.5	1.13	1.13	0.88
H82	3.075	3080	20000	0.56	1.25	1.25	1.22

H2 ATTACHMENT



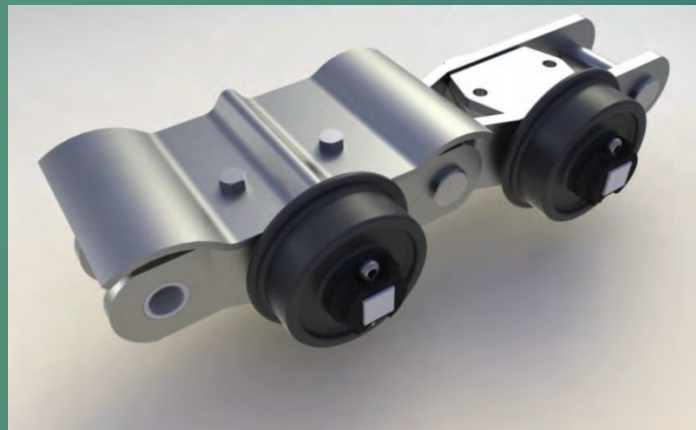
CHAIN No.	Pitch	C	F	X
	P			
H78	2.609	3.5	2.42	1.13

MAIN & AUXILIARY CANE CARRIER CHAINS

The Ewart 'COBRA' Apron Conveyor System

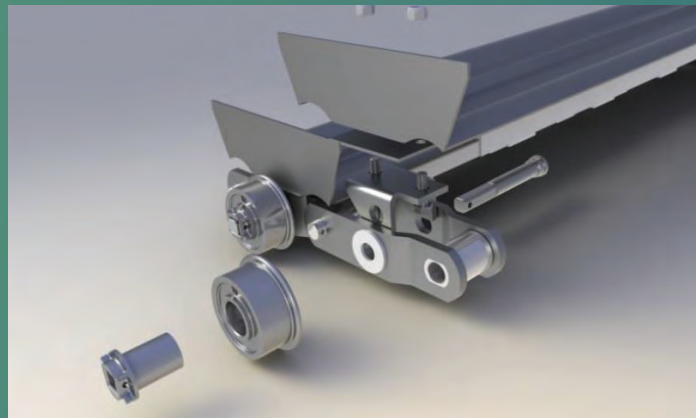
The outboard roller cane carrier chain provides numerous advantages over the conventional type roller chain.

- REDUCED FRICTION AND POWER REQUIREMENT
- INCREASED WEAR LIFE
- HIGHER FATIGUE STRENGTH
- WITHSTANDS HEAVY IMPACT
- SIMPLIFIED MAINTENANCE AND REPLACEMENT



Chain

The 12 in. (304.8mm) pitch chain features large-diameter pins which in turn mean large pin/bush and bush/roller bearing areas for longer life. Pins are heat-treated and induction hardened as standard on chain number C 2630 and heat treated as standard with induction hardening and are an optional extra on No. C 2614. Pins are normally supplied for pressure lubrication. Notable are the close tolerances and full interference fits between chain components.



As the chain is employed primarily for tension, wear takes place on contact with the sprocket. Hardened steel chain rollers minimise this wear, rolling into contact with the sprocket teeth whereas a bushed design would slide into contact.

Clamping Bracket

Between the chain's sideplates is a pearlitic malleable iron clamping bracket with its clamping face set slightly below the top faces of the sideplates.

Through-Bar

Spanning the full width of the conveyor, passing through the chain sideplates and clamping bracket, is a 1 ¼ in. (32mm) square-section steel through-bar.



Carrier Rollers

A single-flanged roller, of 6in (152.4mm) tread diameter and running on a roller sleeve, is fitted to each end of the through-bar, outside the strands of chain. These non-clog track rollers are specially hardened and have large grease reservoirs.

Rollers and sleeves – both of white iron for greater wear-resistance – can be removed without disturbing the chain.

Any wear on the loaded side of the sleeve can be counteracted by turning the sleeve through 90° so as to present a new wear face.

Apron

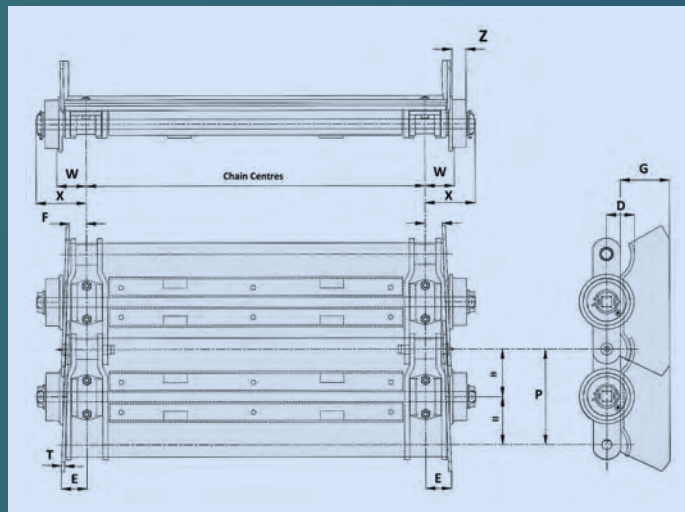
The heavy-gauge, double-corrugated overlapping slat, complete with welded-on apron sides, is clamped rigidly against the top faces of the chain sideplates, via the clamping bracket. Removal of just four clamping bolts frees the tray assembly, when required. High, overlapping apron sides guard against spillage and the generous overlap on the deeply corrugated bead sections of the slat keeps possible leakage to a minimum.

The ¼ in. or 3/8in (6mm or 10mm) thick slat is stiffened across its full span by means of angle sections welded to the underside so as to provide greater beam strength and to prevent distortion. In still more heavily loaded applications, channel instead of angle sections may be used.

Added protection against deflection is furnished by skid blocks welded at specific points along the bracing members, these points being determined by the conveyors width. The skid blocks are arranged slightly clear of the intermediate support rails fitted to the conveyor structure, those being required only at points of loading or other severe impact.

Corrosion Resistance

Stainless steel articulating components can be supplied, where corrosive conditions exist. Some form of lubrication – even steam, blown on to the main components – is then necessary, as stainless steel when used dry has inferior wear resistance to that of standard materials.



CHAIN No.	Chain & Apron Pitch		Average Ultimate Strength (Per Single Chain Strand)		Allowable Chain Pull (Per Single Chain Strand)		Allowable Gross Conveyor Loading		Minimum Radius of Upturn	
	Inches	mm	Lb	Kg	Lb	Kg	Outboard rollers & through-bar every chain pitch	Outboard rollers & through-bar every other chain pitch	Ft	Metres
C2614	12	304.8	140,000	63,500	19,000	8626			12	3.7
C2630	12	304.8	300,000	136,000	21,000	9534	2,800 lb/ft 4,166 kg/m	1,400 lb/ft 2083 kg/m	12	3.7
C2648	12	304.8	400,000	181,436	29,500	13,380			12	3.7
5648	12	304.8	400,000	181,436	33,750	15,300			12	3.7

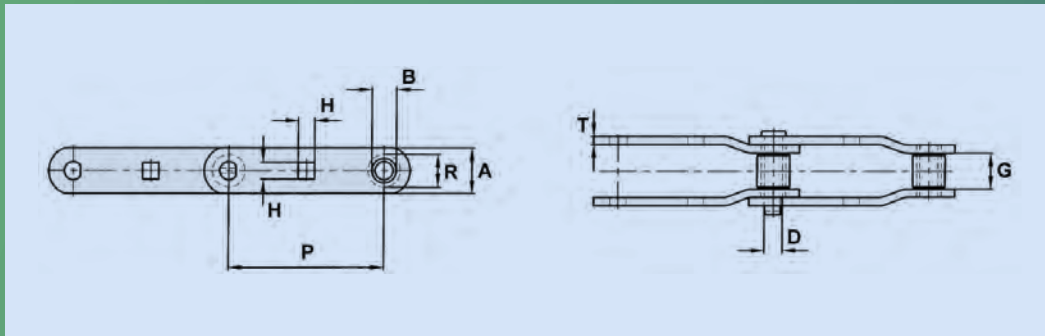
CHAIN No.	E	F	W	X	Roller Tread	Slat Thickness	CL Chain to Top of Slat	Sideplate Thickness	Sideplate Height
					Z		D	T	G
C2614	2.91	2.09	3.69	6.44	1.75	6mm	3.22	6mm	6.25
C2630	2.91	2.09	3.69	6.44	1.75	10mm	3.54	6mm	6.25
C2648	3.49	2.63	4.34	8.00	2.38	8mm	3.63	6mm	6.25
5648	3.49	2.63	4.06	7.98	2.38	8mm	3.88	6mm	6.25

Apron slats, support angles, chain assembly, through-bars, saddles, rollers and roller bushes, bolts etc are **all supplied separately** for final assembly on site.

Slats are supplied with side plates welded in position unless specified otherwise.

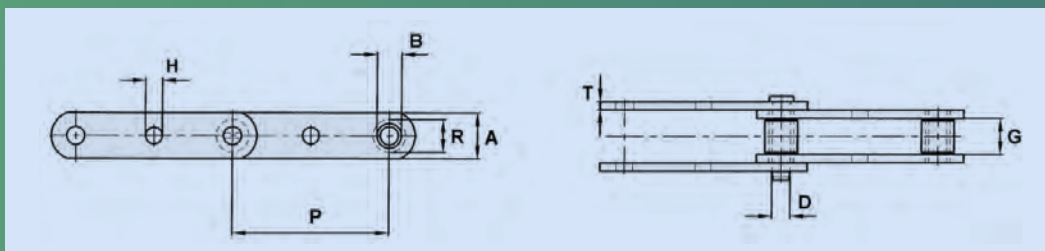
Pressure lubricated chain pins are offered as standard.

CRANKED SIDED



CHAIN No.	Pitch	Allow Load	UTS	Weight Lbs./ft	Pin Diameter	Roller Diameter	Sidebar Depth	Maximum Gearing	Bush Diameter	Bar Diameter	T
	P				D	R	A	G	B	H	
E9112	9	9000	120000	-	0.87	1.75	2.5	1.94	1.25	0.87	0.5
Z397R	12	9180	90000	-	0.87	1.75	2.5	2.25	1.25	0.91	0.38
B5618	12	14000	100000	-	1	2.25	2.5	2.97	1.75	1.03	0.5
B5616	12	12200	139000	-	1	1.75	75mm	2.5	1.75	27mm	12mm
C2614	12	19000	140000	21.93	1.25	2.5	3.5	2.75	1.75	1.25	0.63
R1706	12	19000	140000	12.97	1	2.25	2.5	3	1.49	1.03	0.5
E12140	12	17500	250000	-	1.25	2.5	3.5	2.75	1.78	1.25	0.63
B5801	12	19000	250000	-	1.25	2.5	3.5	2.75	1.75	1.25	0.63
C2630	12	21000	300000	22.9	1.37	2.5	3.5	2.75	1.88	1.25	0.63
E12220	12	21000	350000	-	1.5	3.13	4	2.75	2.19	1.25	0.63
E12230	12	27500	350000	-	1.5	3.5	4	4	2.19	1.25	0.63
E2648	12	29600	177000	-	1.63	3.25	4	3.69	-	-	0.75
C2648	12	29600	400000	34.25	1.61	3.25	4	3.69	2.38	1.48	0.75
5648	12	33750	400000	39.6	1.86	-	4.5	3.68	3.24	1.25	0.75

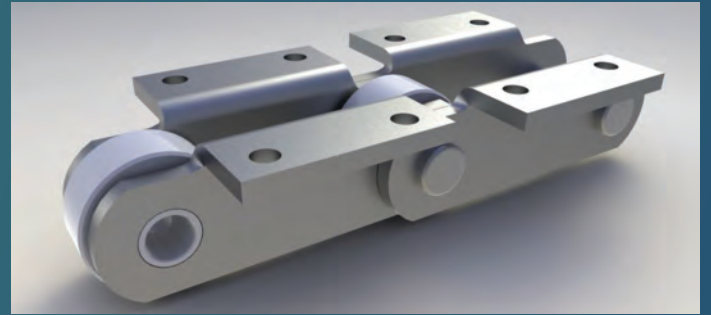
STRAIGHT SIDED



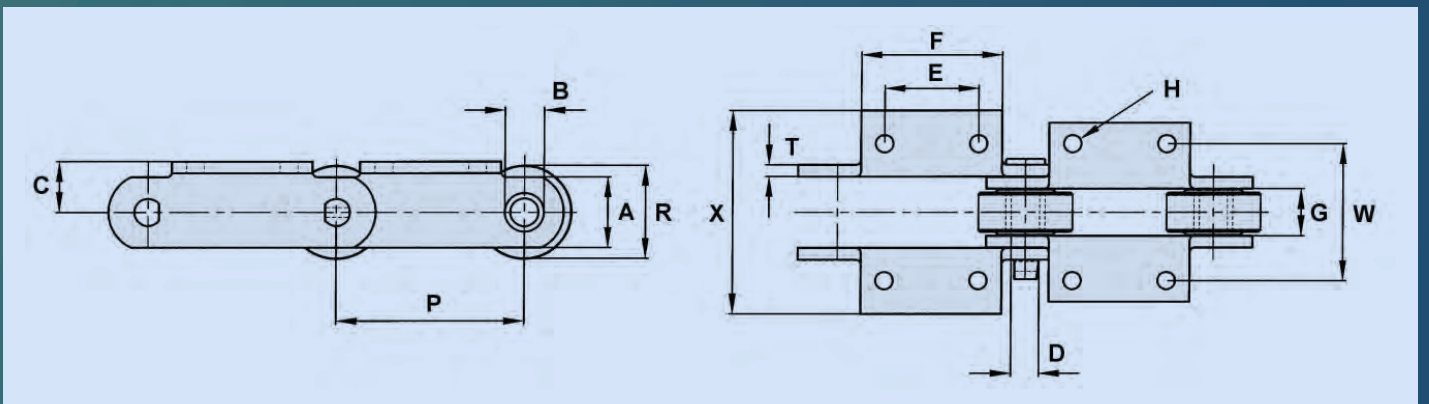
CHAIN No.	Pitch	Allow Load	UTS	Pin Diameter	Roller Diameter	Sidebar Depth	Maximum Gearing	Bush Diameter	Bar Diameter	T
	P			D	R	A	G	B	H	
09060E	6	6350	60000	0.75	1.63	2	1.5	1.13	1.25	0.38
1796E	6	7500	100000	0.87	1.63	2.25	1.5	1.25	1.25	0.38
B5509E	9	7500	100000	0.87	1.63	2.25	1.5	1.25	1.25	0.38

CANE CARRIER ROLLER CHAINS

A wide variety of cane carrier roller chains are available for selection. All are manufactured from high quality steel and heat treated to obtain the optimum characteristics of strength, and wear resistance



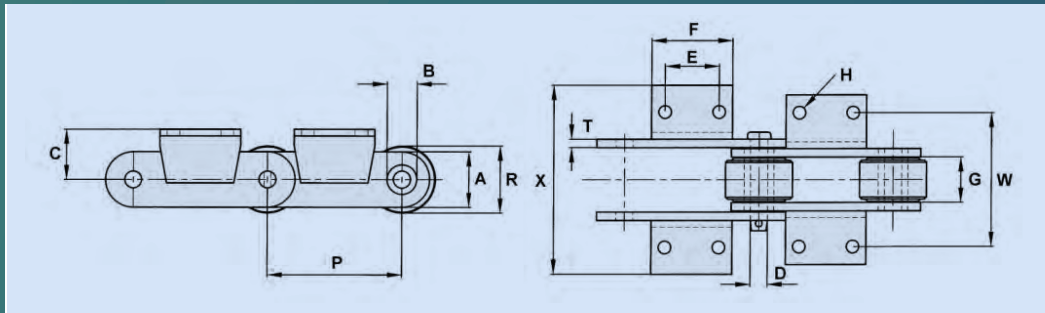
K2 ATTACHMENTS



K2 ATTACHMENTS

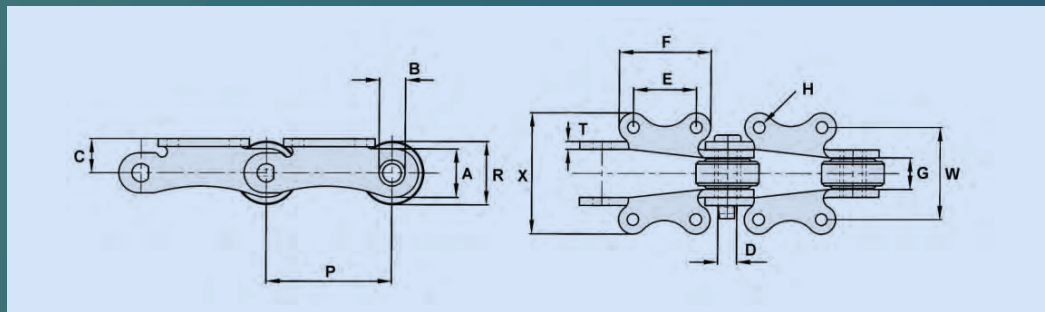
CHAIN No.	Pitch	Allow Load	UTS	Weight Lbs./ft	Pin Dia.	Roller Dia.	Sidebar Depth	Max. Gearing	Bush Dia.	C	E	F	Bolt Dia.	T	W	X
	P				D	R	A	G	B				H			
904	4	4850	40000		0.69	2	1.75	1.22	1	1.25	1.44	2.63	0.38	0.31	3.5	4.13
B5257	6	5375	50000	13.9	0.69	3	1.75	1.44	1	1.63	2.36	4	0.55	0.31	4.72	7.13
9060	6	6350	60000	16.6	0.75	2.75	2	1.5	1.13	1.63	3	4.5	0.5	0.38	4.38	6.75
B5238	6	6350	70000		0.75	3	2.2	1.5	1.13	1.63	3	4.92	0.5	0.38	4.16	5.5
SS996	6	6350	70000	15.3	0.75	2.75	2	1.5	1.13	1.63	3	5.5	0.5	0.38	4.38	5.88
9061	6	6350	85000	17	0.75	2.75	2.25	1.5	1.13	1.63	3	4.5	0.5	0.38	4.38	6.5
B5259	6	6300	100000	16.9	0.75	3	2	1.5	1.13	1.63	2.36	4.5	0.55	0.38	4.72	6.75
B5255	6	7450	100000	18	0.88	3	2.25	1.69	1.25	1.63	2.36	4.5	0.5	0.38	4.92	6.4
1796	6	7500	100000	17.6	0.88	2.75	2.25	1.5	1.25	1.63	3	4.5	0.5	0.38	4.38	6.5
B5263	6	7500	100000	15.8	0.88	2.75	2.19	1.5	1.25	1.63	3	5.5	0.5	0.38	4.38	5.88
B5282	6	7500	100000	20.5	0.88	3.5	2.25	1.5	1.25	2.13	3	4.5	0.5	0.38	4.82	7
B5316	6	7500	100000		0.86	2.75	2.25	1.5	1.3	1.75	2.36	4.5	0.5	0.5	5.13	6.82
LB960	6	7500	100000	18.4	0.86	2.75	2.25	1.5	1.3	1.63	3	4.38	0.5	0.5	4.38	5.94
SS960	6	7500	100000	18.4	0.86	2.75	2.25	1.5	1.3	1.63	3	4.38	0.5	0.5	4.38	5.94
113	6	7500	100000	21.7	0.87	3.19	2.56	1.5	1.25	1.79	3	4.45	0.5	0.5	4.38	5.9
SS2198	6	7650	100000	18.8	0.88	2.75	2.25	1.5	1.25	1.63	3	4.5	0.5	0.5	4.38	5.94
B5310	6	8300	100000	18	0.88	3	2.25	1.75	1.38	1.63	2.63	4.5	0.5	0.38	4.92	6.75
A2198	6	8400	100000	19.2	0.87	3	2.38	1.53	1.25	1.69	3	4.38	0.5	0.5	4.38	5.88
B5260	6	10200	130000	25.5	0.97	3.38	2.81	2.19	1.38	1.84	2.2	3.69	0.5	0.38	6.1	5.13
B5284	6	7350	138000	18.5	0.94	3	2.44	1.5	1.31	1.75	3	4.5	0.5	0.38	4.38	6.5
2047	6	7800	140000	19.1	0.94	3	2.5	1.63	1.38	1.75	3	4.5	0.5	0.38	4.38	6.16
9063	6	8300	140000	18.5	0.94	3	2.38	1.5	1.25	1.75	3	4.5	0.5	0.41	4.38	6.5
B09063	6	8300	140000	18.5	0.94	3	2.38	1.5	1.43	1.75	3	4.5	0.5	0.41	4.38	6.5
B5293	6	8300	140000	19	0.94	3	2.44	1.5	1.25	1.75	3	4.5	0.5	0.41	4.38	6.5
9065	6	9275	160000	20.2	1.06	3	2.38	1.5	1.5	1.69	3	4.38	0.5	0.5	4.38	5.88
B5249	6	10700	167000	24.3	1	3	2.5	1.81	1.5	2	2.5	4.5	0.5	0.5	5.13	6.75
B5269	6	7500	175000	17	0.88	2.75	2.25	1.5	1.25	2	3	4.5	0.5	0.38	4.38	6.53
B5304	6.3	5800	70000		0.75	90mm	2.19	1.75	1.13	1.25	3.13	4	10mm	0.25	4.4	5.4
116	8	10000	150000	28.4	1	4	3	1.81	1.5	2.2	3.25	5.27	0.63	0.5	5.25	7.78
B5455	8	10700	150000	24.73	1	3.5	2.81	1.81	1.5	2.19	3.25	6	0.69	0.5	5.19	7.25
B5456	8	10700	150000		1	3.5	2.88	1.81	1.5	2.19	3.25	5	0.5	0.5	5.78	7.44
B5457	8	10700	150000	20.3	1	3.5	2.88	1.81	1.5	2.19	3.25	5	0.63	0.5	5.19	6.8
SS800R	8	10700	167000	27.2	1	3.5	2.81	1.81	1.5	2.19	4.5	2	0.63	0.5	5.19	7.25
2804	8	24500	215000	46.2	1.5	4.25	3.5	3.63	2.12	2.75	3.25	5.75	0.63	0.5	7.63	10.25
B5458	8	15900	286500	47.67	1.3	4.5	3.5	2.25	1.81	3	3.25	6	0.63	0.63	8	10.38
B5501	9	7500	100000		0.88	3.5	2.25	1.5	1.38	2	3.5	5.38	0.63	0.38	5.75	8.02
B5509	9	7500	100000		0.88	3	2.25	1.5	1.25	2	3.5	5.38	0.63	0.38	5.75	8.02
B5499	9	9200	100000	25.2	1	3.63	2.75	1.63	1.5	2.5	4.5	6	0.63	0.5	6.19	7.69
B5513	9	16000	180000	37.3	1.25	4.25	2.75	2.4	1.75	2.21	3	6	0.75	0.63	8	11.56
C2614	12	19000	140000		1.25	2.5	3.5	2.75	1.75	2.75	6	8	0.63	0.63	8	10.15
C2630	12	21000	300000		1.37	2.5	3.5	2.75	1.88	2.75	6	8	0.63	0.63	8	10.15

K2 ATTACHMENTS



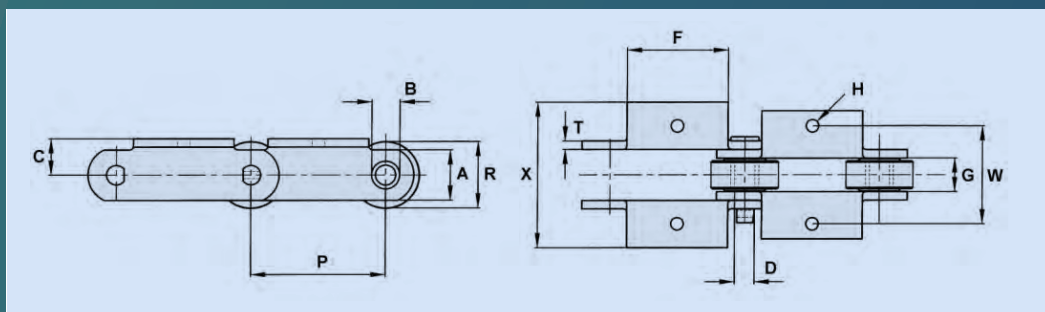
NOTE: WELDED ANGLE ATTACHMENT.

CHAIN No.	Pitch	Allow Load	UTS	Pin Dia.	Roller Dia.	Sidebar Depth	Max. Gearing	Bush Dia.	C	E	F	Bolt Dia.	T	W	X
	P			D	R	A	G	B				H			
B5442	7.874	13900	135000	1	100MM	3	2.66	1.75	2.95	3.13	4.72	0.69	0.39	7.88	11



CHAIN No.	Pitch	Allow Load	UTS	Weights Lbs./ft	Pin Dia.	Roller Dia.	Sidebar Depth	Max. Gearing	Bush Dia.	C	E	F	Bolt Dia.	T	W	X
	P				D	R	A	G	B				H			
SS800	6	7500	100000	14	0.88	2.75	2.3	1.5	1.25	1.63	3	4.38	0.5	0.38	4.38	5.75

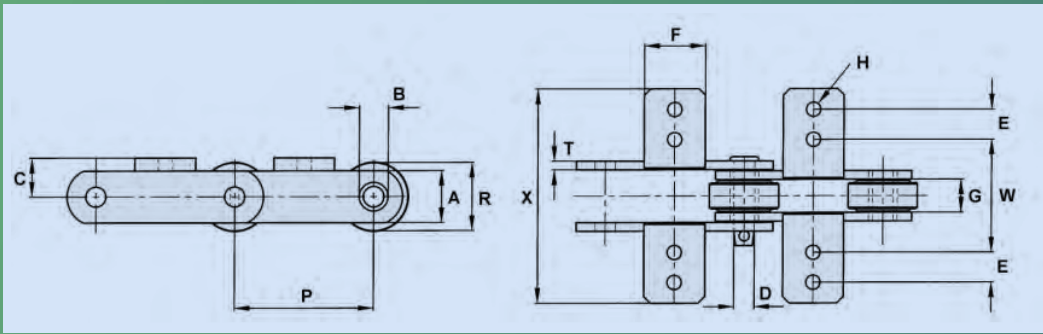
K1 ATTACHMENTS



CHAIN No.	Pitch	Allow Load	UTS	Pin Dia.	Roller Dia.	Sidebar Depth	Max. Gearing	Bush Dia.	C	F	Bolt Dia.	T	W	X
	P			D	R	A	G	B			H			
B5044	3	2100	13000	0.43	1.5	1.12	1	0.64	0.81	2	0.38	0.19	2.94	3.88
B5041*	3	3885	25000	0.55	1.75	1.5	1.5	0.8	1.5	2	0.5	0.25	4.4	6.38
B5093	4	4850	40000	0.69	2.25	1.75	1.22	1	1.25	2.63	0.5	0.31	4	6

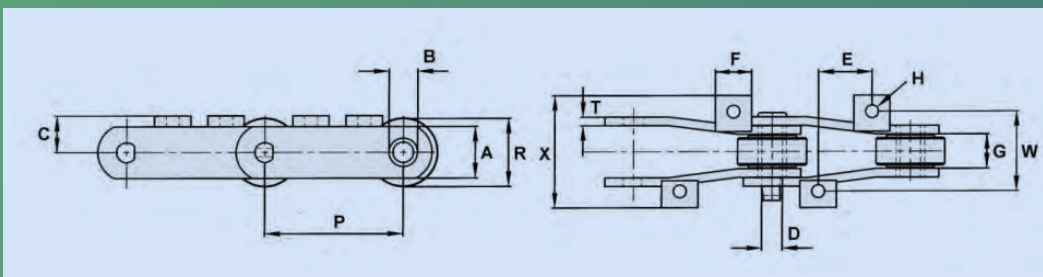
* = FLANGED ROLLER

K19 ATTACHMENT

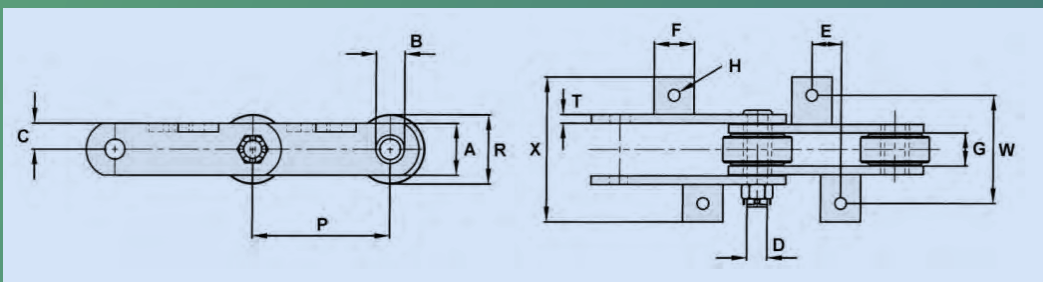


CHAIN No.	Pitch	Allow Load	UTS	Pin Dia.	Roller Dia.	Sidebar Depth	Max. Gearing	Bush Dia.	C	E	F	Bolt Dia.	T	W	X
	P			D	R	A	G	B				H			
B5057	3.937	4300	50000	0.62	3	1.75	1.06	0.91	1.13	0.87	1.75	0.38	0.38	3.62	6.53

K11 ATTACHMENT

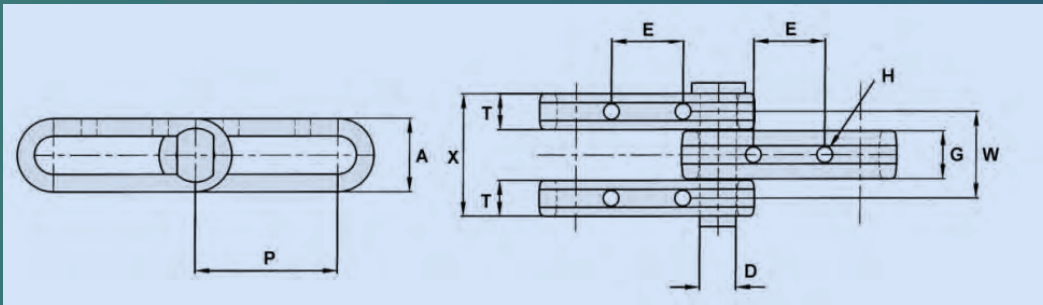


CHAIN No.	Pitch	Allow Load	UTS	Pin Dia.	Roller Dia.	Sidebar Depth	Max. Gearing	Bush Dia.	C	E	F	Bolt Dia.	T	W	X
	P			D	R	A	G	B				H			
B5276	6.05	5900	60000	0.75	2.63	2	1.38	1.13	1.47	2.31	1.57	0.5	0.38	3.5	4.9



CHAIN No.	Pitch	Allow Load	UTS	Pin Dia.	Roller Dia.	Sidebar Depth	Max. Gearing	Bush Dia.	C	E	F	Bolt Dia.	T	W	X
	P			D	R	A	G	B				H			
B5286	6	8700	100000	1.02	75MM	2.38	1.69	1.43	1.19	1.28	1.75	0.5	0.38	4.88	6.19

LOOP LINK ATTACHMENT

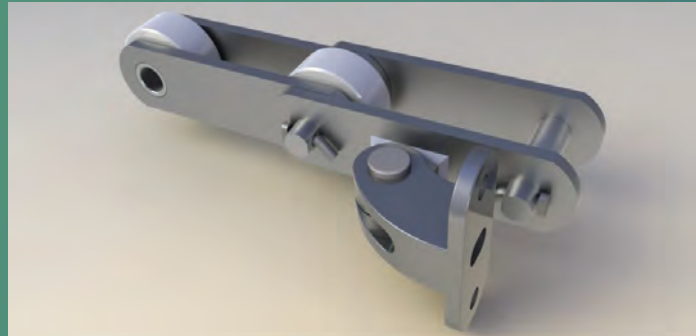


CHAIN No.	Pitch	Allow Load	UTS	Pin Diameter	Roller Diameter	Sidebar Depth	Max. Gearing	Bush Diameter	E	Bolt Diameter	T	W	X
	P			D	R	A	G	B		H			
B5291	6	11600	320000	1.53	-	3.06	2	-	3	0.63	1.5	3.56	5.06

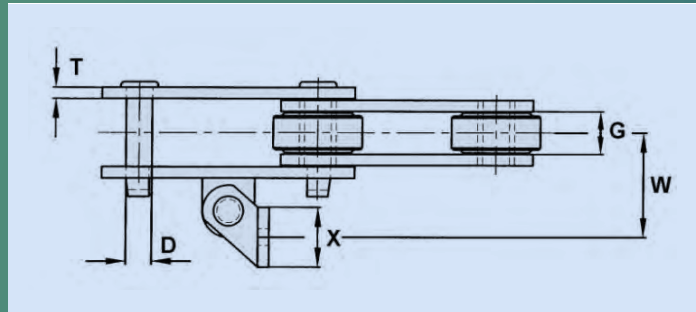
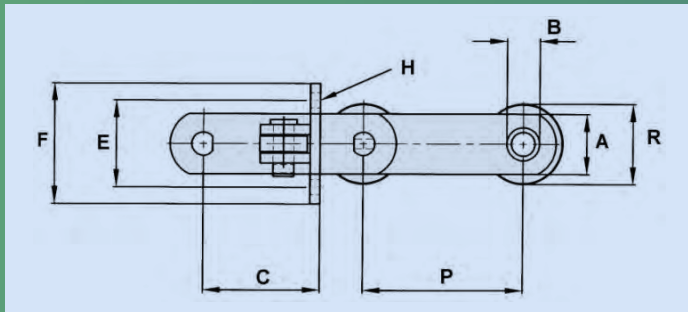
INTERMEDIATE CARRIER ROLLER CHAINS

When high loads dictate a stronger chain all steel roller versions will meet the need.

Slat type carriers with K2 attachments or Scraper type with AS2 attachments shown here, both with stainless articulating parts will ensure trouble free intercarriers.

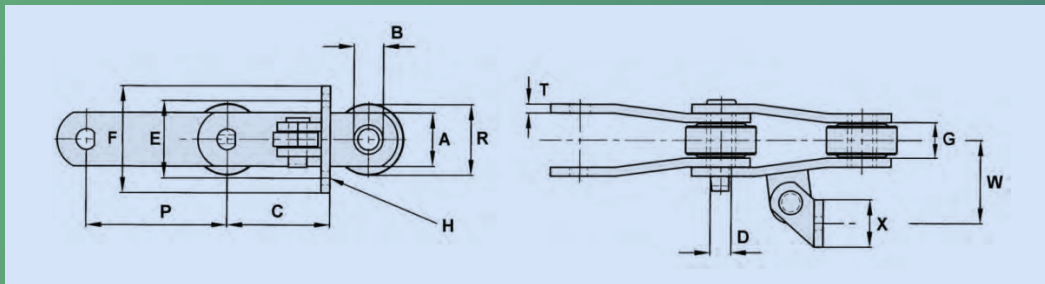


AS2 ATTACHMENTS

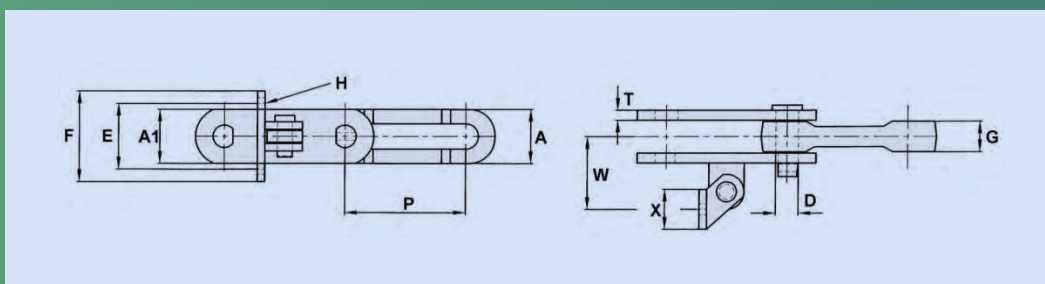


CHAIN No.	Pitch	Allow Load	UTS	Weight Lbs./ft		Pin Dia.	Roller Dia.	Sidebar Depth	Max. Gearing	Bush Dia.	C	E	F	Bolt Dia.	T	W	X
	P			Plain	AS2	D	R	A	G	B				H			
904	4	4850	40000			0.69	2	1.75	1.22	1	3.13	3.25	4.25	0.38	0.31	3.06	1.75
B5294	6	5740	49000			0.75	2.75	2	1.69	1.13	5.63	3.5	5	0.5	0.25	4.72	2
B5264	6	5250	60000			0.75	3	2	1.37	1.13	5.63	3.5	5	0.5	0.31	3.63	2
B5259	6	6300	100000			0.75	3	2	1.5	1.13	4.38	3.25	4.5	0.5	0.38	3.63	2
9060	6	6350	60000	11.2	15.5	0.75	2.75	2	1.5	1.13	4.38	3.25	4.5	0.5	0.38	3.5	2
D0906	6	6350	60000			0.75	2.75	2	1.5	1.13	4.38	3.25	4.5	0.5	0.38	3.5	2
9061	6	6350	85000	12	19.5	0.75	2.75	2.25	1.5	1.13	4.38	3.25	4.5	0.5	0.38	3.5	2
1796	6	7500	100000	12.6	17.5	0.87	2.75	2.25	1.5	1.25	4.38	3.25	4.5	0.5	0.38	3.5	2
B5269	6	7500	175000			0.87	2.75	2.25	1.5	1.25	5.63	3.5	5	0.5	0.38	3.75	2
SS2198	6	7650	100000			0.87	2.75	2.25	1.5	1.25	5.63	3.5	5	0.5	0.5	3.88	2
B5293	6	8300	140000			0.94	3	2.44	1.5	1.25	5.63	3.5	5	0.5	0.41	3.94	2
9063	6	8300	140000	15.2	20.8	0.94	3	2.38	1.5	1.25	5.63	3.5	5	0.5	0.41	3.94	2
A2198	6	8400	100000			0.87	3	2.38	1.53	1.25	5.63	3.5	5	0.5	0.5	3.91	2
B5256	6	8970	117000			1	75mm	2.5	1.81	1.5	5.56	5.5	7.25	0.75	0.38	3.63	2.36
9065	6	9275	160000			1.06	3	2.38	1.5	1.5	4.38	3.31	4.5	0.5	0.5	3.61	1.94
B5276	6.05	5900	60000			0.75	2.63	2	1.38	1.13	4.4	3.25	4.5	0.5	0.38	3.38	2
B5267	6.06	7200	50000			1	3	2.25	1.31	1.5	4.41	3.25	4.5	0.5	0.38	3.41	2
B5509	9	7500	100000			0.87	3	2.25	1.5	1.25	7.13	3.5	5	0.5	0.38	4.12	2

AS2 ATTACHMENTS

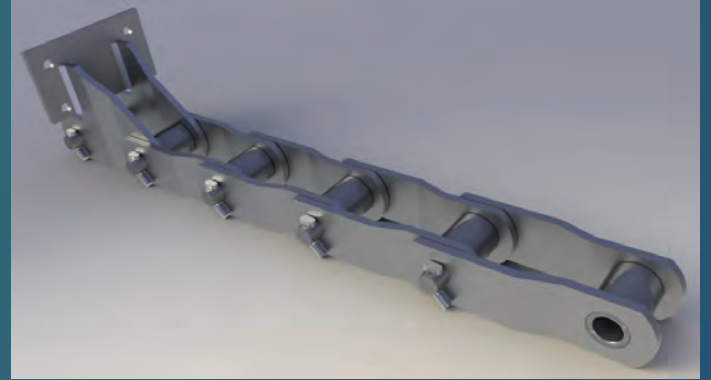


CHAIN No.	Pitch	Allow Load	UTS	Weight Lbs./ft		Pin Dia.	Roller Dia.	Sidebar Depth	Max. Gearing	Bush Dia.	C	E	F	Bolt Dia.	T	W	X
				Plain	AS2												
	P				D	R	A	G	B	C	E	F	H				
9060	6	6350	60000	11.2	15.2	0.75	2.75	2	1.5	1.13	4.38	3.25	4.5	0.5	0.38	3.5	2
9061	6	6350	85000	12	19.5	0.75	2.75	2.25	1.5	1.13	4.38	3.25	4.5	0.5	0.38	3.5	2
B5280	6	6700	55000			0.87	3	2	1.44	1.25	5.63	3.5	5	0.5	0.38	3.63	2
B5234	6	7100	80000			0.87	3	2	1.37	1.25	5.63	3.5	5	0.5	0.38	3.63	2
B5311	6	7100	80000			0.87	3	2	1.38	1.25	5.63	3.5	5	0.5	0.38	3.63	2
D2184	6	7100	80000	11.7	16.2	0.87	3	2	1.38	1.25	5.63	3.5	5	0.5	0.38	3.63	2
DN2184	6	7100	80000	12.3	17.9	0.87	3	2	1.38	1.25	5.63	3.5	5	0.5	0.38	3.63	2
1796	6	7500	100000	12.6	17.5	0.87	2.75	2.25	1.5	1.25	4.38	3.25	4.5	0.5	0.38	3.5	2
SS2198	6	7650	100000			0.87	2.75	2.25	1.5	1.25	5.63	3.5	5	0.5	0.5	3.88	2
9063	6	8300	140000	15.2	20.8	0.94	3	2.38	1.5	1.25	5.63	3.5	5	0.5	0.41	3.94	2
9184	6	8500	175000			0.94	3	2.5	1.56	1.38	5.63	3.5	5	0.5	0.5	3.91	2
9185	6	8500	175000			0.94	3.5	2.5	1.56	1.38	5.63	3.5	5	0.5	0.5	3.91	2
F9184	6	8500	175000			0.94	3	2.5	1.56	1.38	5.63	3.5	5	0.5	0.5	3.91	2
SS2186	6	9500	175000			1	3.5	2.5	1.5	1.38	5.63	3.5	5	0.5	0.5	3.63	2
B5313	6	10550	140000			1.16	3	2.5	1.58	1.5	5.63	3.5	5	0.5	0.5	4	2
B5276	6.05	5900	60000			0.75	2.63	2	1.38	1	4.4	3.25	4.5	0.5	0.38	3.38	2
326	8	10000	150000	22.7	37.4	1	4	80mm	2.88	1.5	7.28	4.72	6.89	0.63	0.5	5.51	2.36
8184	8	10700	167000	19	23.9	1	3.5	2.75	1.81	1.5	6.63	3.5	5	0.5	0.5	4.22	2

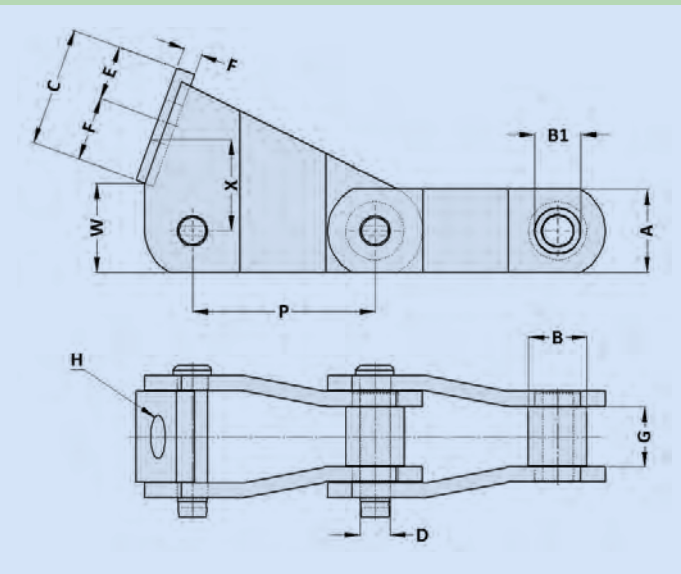


CHAIN No.	Pitch	Allow Load	UTS	Pin Dia.	Inner Side Depth	Outer Side Depth	Max. Gearing	E	F	Bolt Dia.	T	W	X
B5283	6.031	6400	136000	1.12	2.5	2.69	1.63	3.25	4.5	0.5	0.5	3.63	2

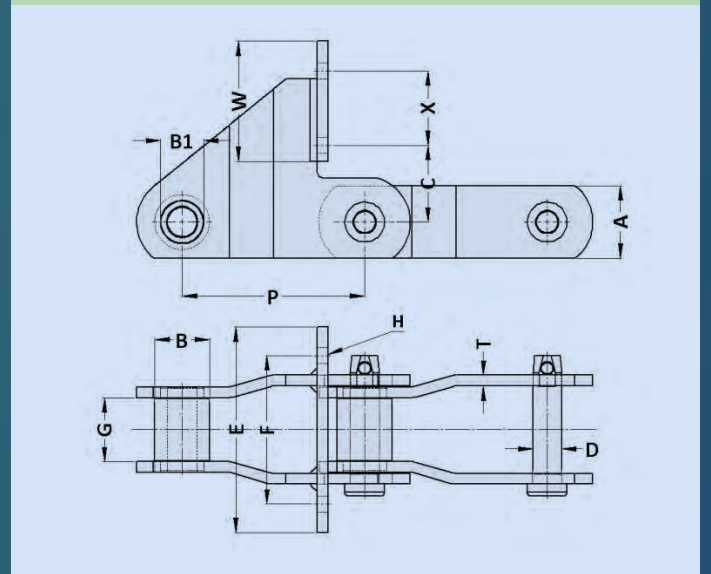
Due to the severity of corrosive attack on rotating chain parts, Ewart have developed a range of chains to meet these conditions. A selection of which are shown below.



WH132

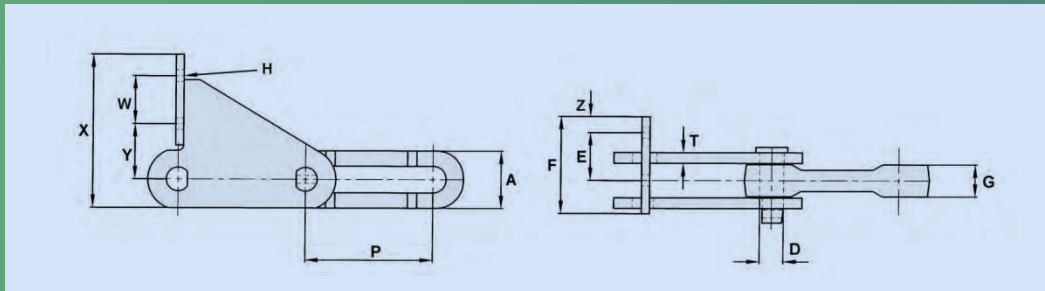


BOP160/200

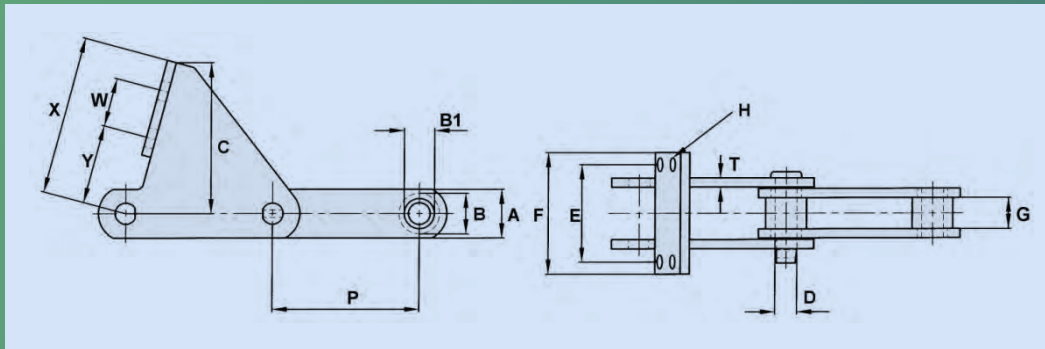


CHAIN No.	Pitch	Allow Load	UTS	Weight		Pin Dia.	Sidebar Depth	Max. Gearing	Bush Dia.	Bush Neck	C	E	F	Bolt Dia.	T	W	X
				Plain	Attach												
WH132	P	11000	150000	7.76	13.3	D	A	G	B	B1				H			
BOP160	6.05	10300	100000	6	10.9	1	2.5	2.2	1.89	1.49	2.65	7.08	5.12	0.55	0.38	4.13	2.56
BOP200	6.299	10300	100000	5	9	1	2.5	2.2	1.89	1.49	2.65	7.08	5.12	0.55	0.38	4.13	2.56

PUSHER TYPE

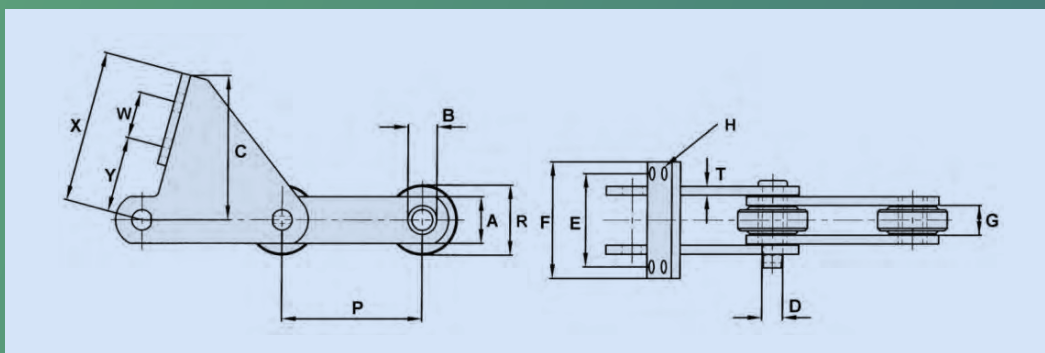


CHAIN No.	Pitch	Allow Load	UTS	Pin Dia.	Sidebar Depth	Max Gearing	E	F	Bolt Dia.	T	W	X	Y	Z
	P			D	A				H					
B5283	6.031	6400	136000	1.12	2.69	1.63	2.25	4.56	0.5	0.5	2.25	7.19	2.6	0.75

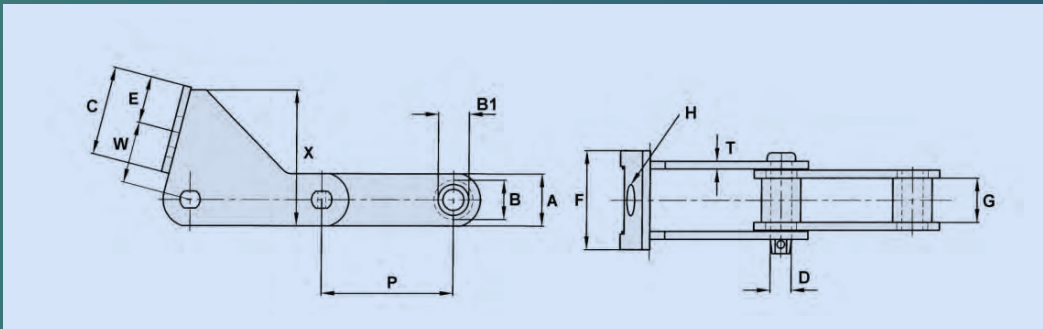


CHAIN No.	Pitch	Allow Load	UTS	Pin Dia.	Sidebar Depth	Max Gearing	Bush Dia.	Bush Neck	C	E	F	Bolt Dia.	T	W	X	Y
	P			D	A	G	B	B1				H				
1796	6	7500	100000	0.87	2.25	1.5	1.75	1.25	3.88	120mm	160mm	12mm	0.38	50mm	5.06	2.11
D2184	6	7100	80000	0.87	2	1.38	1.25	-	6.28	4	5	0.5	0.38	2	6.5	3.25

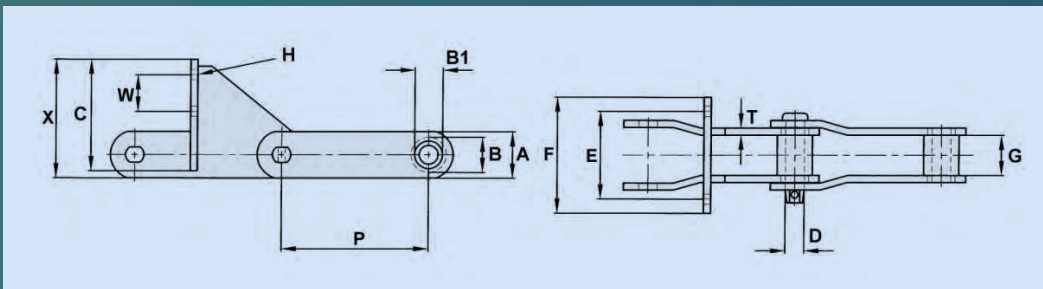
* USHER FACES ARE VERTICAL



CHAIN No.	Pitch	Allow Load	UTS	Pin Dia.	Sidebar Depth	Max Gearing	Bush Dia.	Bush Neck	C	E	F	Bolt Dia.	T	W	X	Y
	P			D	A	G	B	B1				H				
2084	6	7300	100000	0.87	3	2	1.38	1.25	5.06	2.38	5.5	0.56	0.5	1.81	5.56	2
D2184	6	7100	80000	0.87	3	2	1.38	1.25	5	4.75	6.25	0.5	0.38	2.19	5.69	2.13
D2184	6	7100	80000	0.87	3	2	1.38	1.25	6.28	4	5	0.5	0.38	2	6.5	3.25
D2184	6	7100	80000	0.87	3	2	1.38	1.25	6.28	3.63	5	0.44	0.38	3.5	7.5	3.25



CHAIN No.	Pitch	Allow Load	UTS	Pin Dia.	Sidebar Depth	Max Gearing	Bush Dia.	Bush Neck	C	E	F	Bolt Dia.	T	W	X
	P			D	A	G	B	B1				H			
E160	160mm	10300	100000	1	2.25	2.2	48mm	1.5	4.25	2.25	4.75	1.5	0.38	2.93	6.5
EC160A	160mm	10300	100000	1	2.25	2.2	48mm	1.5	4.25	2.25	4.75	1.5	0.38	2.93	6.5
506	6.05	10330	170000	1	2.75	1.94	48mm	1.5	3.75	1.75	3.75	36mm	0.5	3	6



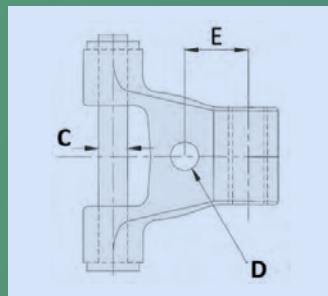
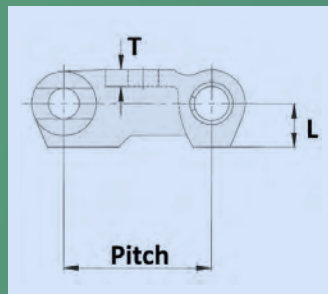
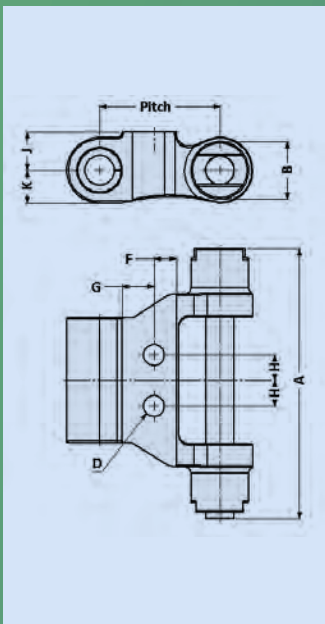
CHAIN No.	Pitch	Allow Load	UTS	Pin Dia.	Sidebar Depth	Max Gearing	Bush Dia.	Bush Neck	C	E	F	Bolt Dia.	T	W	X
	P			D	A	G	B	B1				H			
EC160A	160MM	10300	100000	1	2.5	2.2	48mm	1.5	3.5	108mm	140mm	12mm	0.38	50mm	6.33
EC160A	160MM	10300	100000	1	2.5	2.2	48mm	1.5	3.5	120mm	160mm	12mm	0.38	50mm	6.33
EC200	200MM	10300	100000	1	2.5	2.2	48mm	1.5	6	120mm	6.25	12mm	0.38	50mm	6.38

INTERMEDIATE CARRIER CHAINS

This range of chains has been developed to combat the extreme corrosion created by continuous operation in raw sugar juice.

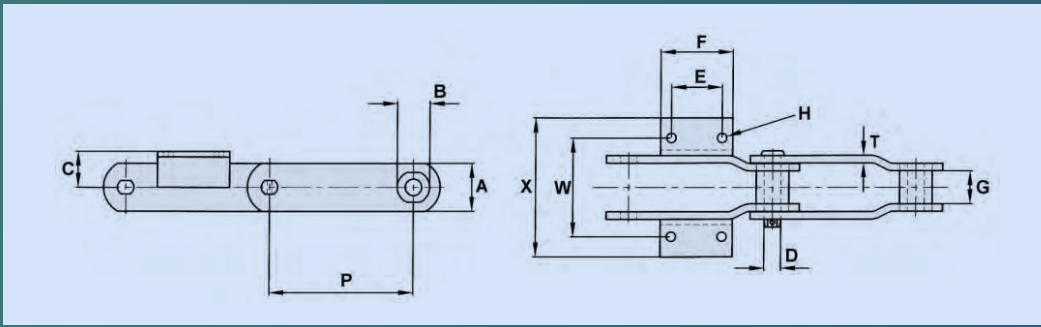
For increased resistance to corrosion Stainless Steel articulating components are available.

Where severe conditions are encountered all these chains are available in a Stainless Steel material.

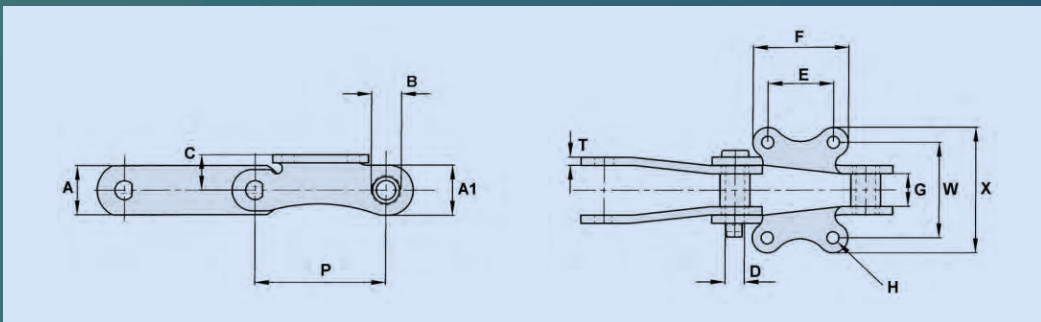


CHAIN No.	Pitch	Style	Allowable Chain Pull		Weight Lb/ft	A	B	C	Bolt Dia. D	E	F	G	H	J	K	L	T
			Lb	Kg													
5174E4	2.36	A	3290	10215	11.7	5.5	1.13	0.53	0.38	1.06	0.44	0.63	0.5	0.75	0.66	-	0.31
901E41	3.15	B	4200	13620	12.5	5.75	1.34	0.63	0.63	1.75	0.59	0.78	-	0.78	-	0.94	0.36
901E43	3.15	B	4200	13620	12.5	5.75	1.34	0.63	0.38	1.75	0.59	0.78	0.56	0.78	-	0.94	0.36
901E42	3.15	B	4200	13620	12.5	5.75	1.34	0.63	0.63	1.56	0.66	0.59	-	0.78	-	0.94	0.36
901E44	3.15	B	4200	13620	12.5	5.75	1.34	0.63	0.38	1.56	0.66	0.59	0.56	0.78	-	0.94	0.36
907E51	3.17	B	4200	15890	13.4	5.75	1.41	0.63	0.63	1.5	0.69	0.69	-	0.72	-	0.94	0.36

K2 ATTACHMENTS

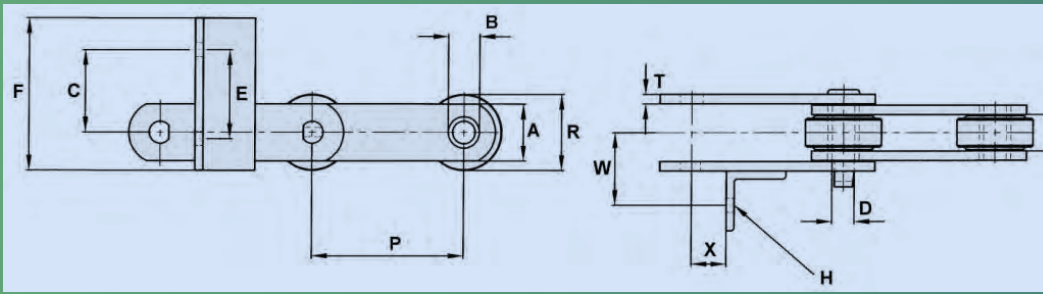


CHAIN No.	Pitch	Allow Load	UTS	Pin Dia.	Sidebar Depth	Max Gearing	Bush Dia.	C	E	F	Bolt Dia.	T	W	X
	P			D	A	G	B				H			
C69A	12	21000	300000	1.38	4	2.75	2.75	3	4.21	6	18mm	0.63	8.25	11.22
C84	9	17500	250000	1.25	3.25	2.87	2.5	3	3	4.5	16mm	0.56	8.25	11.09

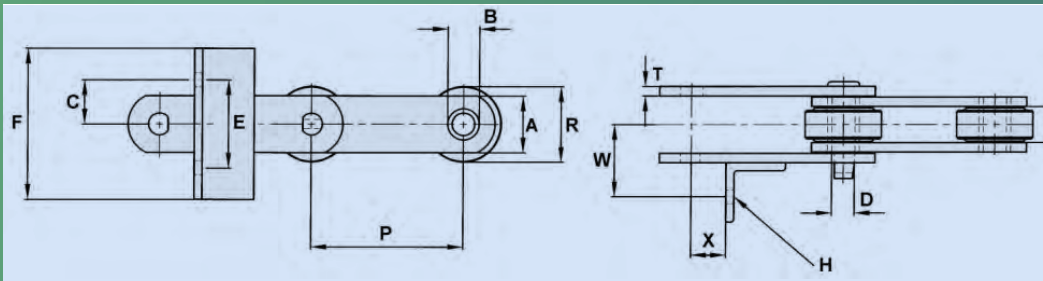


CHAIN No.	Pitch	Allow Load	UTS	Pin Dia.	Sidebar Depth	Attach. Sidebar Depth	Max Gearing	Bush Dia.	C	E	F	Bolt Dia.	T	W	X
	P			D	A	A1	G	B				H			
B5252	6	7500	100000	0.87	2.25	2.3	1.5	1.38	1.63	3	4.38	0.5	0.38	4.38	5.75

F TYPE ATTACHMENTS

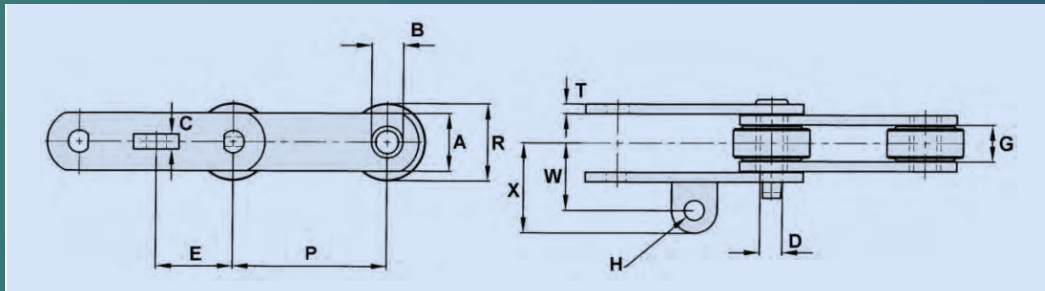


CHAIN No.	Pitch	Allow Load	UTS	Pin Dia.	Roller Dia.	Sidebar Depth	Max Gearing	Bush Dia.	C	E	F	Bolt Dia.	T	W	X
	P			D	R	A	G	B				H			
B5278	6	7650	77000	0.94	3.5	2.5	1.56	1.25	3.25	3.5	6	12MM	0.38	2.87	1.38

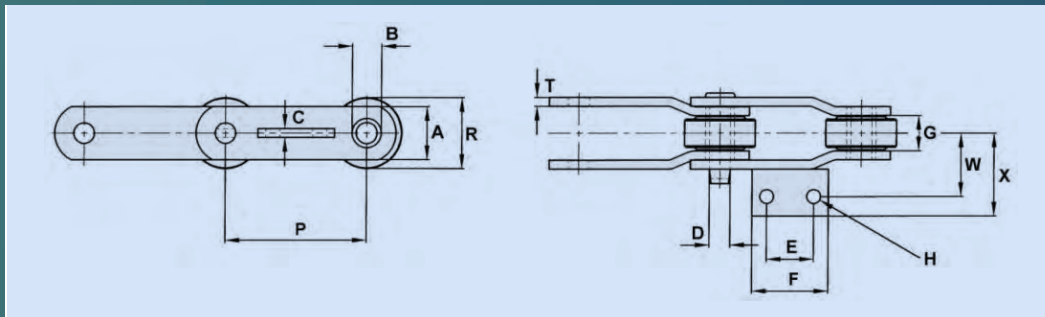


CHAIN No.	Pitch	Allow Load	UTS	Pin Dia.	Roller Dia.	Sidebar Depth	Max Gearing	Bush Dia.	C	E	F	Bolt Dia.	T	W	X
	P			D	R	A	G	B				H			
B5461	8	3300	150000	0.75	1.88	1.5	0.75	0.92	1.13	2.25	3.38	10MM	0.25	1.75	3

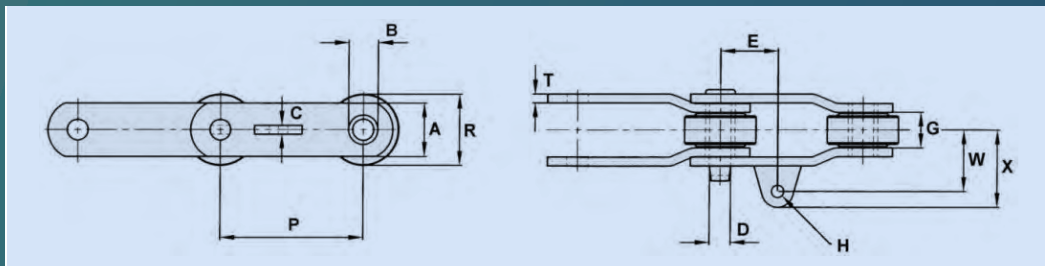
LUG ONLY ATTACHMENTS



CHAIN No.	Pitch	Allow Load	UTS	Pin Dia.	Roller Dia.	Sidebar Depth	Max Gearing	Bush Dia.	C	E	Bolt Dia.	T	W	X
	P			D	R	A	G	B			H			
B5262	6	6600	100000	0.75	2.75	2	1.56	1.13	15mm	3	0.63	0.38	2.75	3.73
B5273	6	7650	70500	0.88	2.75	60mm	1.51	1.38	30mm	3	0.75	10mm	2.89	3.83
B5294	6	5740	49000	0.75	2.75	2	1.69	1.13	12mm	3	18mm	0.25	3.53	4.39

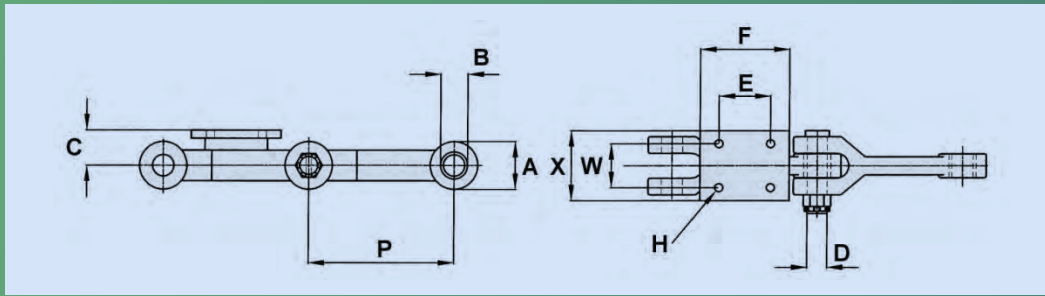


CHAIN No.	Pitch	Allow Load	UTS	Pin Dia.	Roller Dia.	Sidebar Depth	Max Gearing	Bush Dia.	C	E	F	Bolt Dia.	T	W	X
	P			D	R	A	G	B				H			
B5261	6	7100	80000	0.88	3	2	1.37	1.25	0.38	2	3.25	14MM	0.38	2.63	3.45
B5297	6	7100	80000	0.88	3	2	1.37	1.25	12MM	3	4.5	0.63	0.38	3	3.82



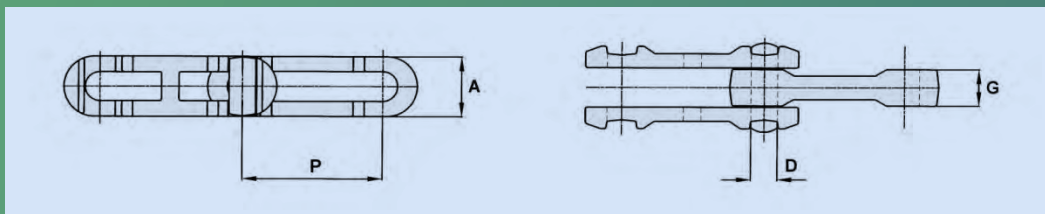
CHAIN No.	Pitch	Allow Load	UTS	Pin Dia.	Roller Dia.	Sidebar Depth	Max Gearing	Bush Dia.	C	E	Bolt Dia.	T	W	X
	P			D	R	A	G	B			H			
B5515	9	8500	120000	1	3.5	2.25	1.5	1.5	15MM	4.5	0.75	0.38	3.12	4.12

FORGED BLOCK LINK



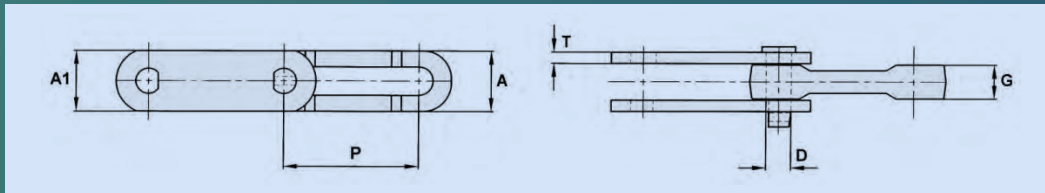
CHAIN No.	Pitch	Allow Load	UTS	Pin Diameter	Sidebar Depth	Bush Dia.	C	E	F	Bolt Dia.	W	X
	P			D	A	B				H		
E229	9		135000	35mm	60mm	41mm	53mm	70mm	105mm	16mm	85mm	120mm
E305	12		194000	45mm	100mm	57mm	74mm	108mm	187mm	16mm	92mm	127mm

FORGED RIVETLESS



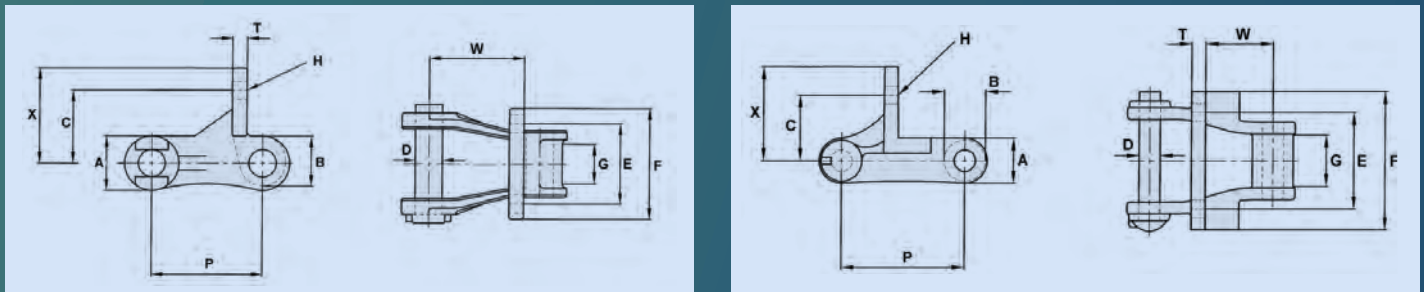
CHAIN No.	Pitch	Allow Load	UTS	Pin Diameter	Sidebar Depth	Maximum Gearing
	P			D	A	G
348	3.031	2400	24000	0.5	1.13	0.74
458	4.031	3000	48000	0.62	1.38	1.06
468	4.031	7000	68000	0.75	1.88	1.81
678	6.031	8500	85000	0.87	2	1.25
698	6.031	13000	136000	1.1	2.53	1.53
698HDX	6.031	200000	136000	1.1	2.69	1.53
998	9.031	13000	136000	1.1	2.66	1.53
9118	9.031		220000	16	1.38	2

BAR LINK CHAINS



CHAIN No.	Pitch	Allow Load	UTS	Pin Diameter	Inner Side Depth	Outer Side Depth	Maximum Gearing	T
	P			D	A	A1	G	
S3699	6.031	6000	130000	1.12	2.5	2.88	1.56	0.5
B5283	6.031	6400	136000	1.12	2.5	2.69	1.63	0.5

CAST PINTLE F29 TYPE

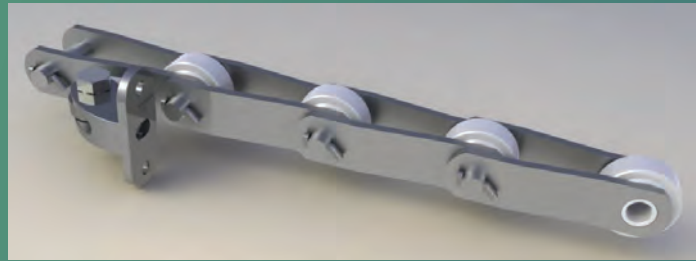


CHAIN No.	Pitch	Allow Load	UTS	Pin Dia.	B	C	E	F	Bolt Dia.	T	W	X
	P			D					H			
4103F29	3.075	3500	22000	0.75	1.25	2	3.22	3.28	0.5	0.44	2.64	2.64
488F2	2.609	1800	11000	0.44	0.87	1.38	2.03	2.91	0.31	0.28	1.42	1.97

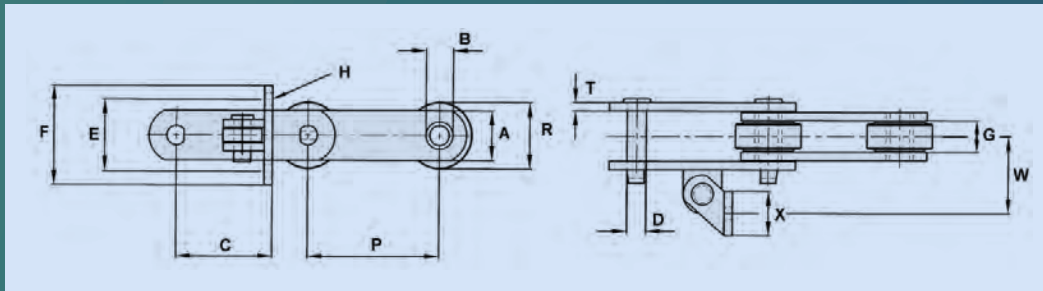
BAGASSE ELEVATOR & CONVEYOR CHAINS

A wide variety of Bagasse Conveyor Roller Chains are available for selection.

All are manufactured from high quality steel and heat treated to obtain optimum characteristics of strength and wear resistance.

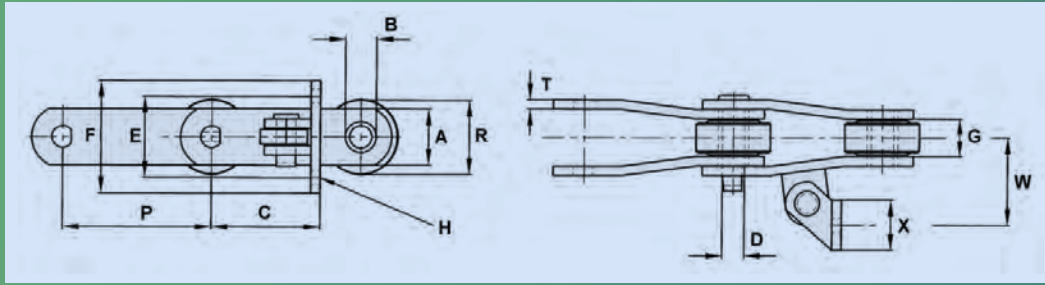


AS2 ATTACHMENTS



CHAIN No.	Pitch	Allow Load	UTS	Weight Lbs./ft		Pin Dia.	Roller Dia.	Sidebar Depth	Max. Gearing	Bush Dia.	C	E	F	Bolt Dia.	T	W	X
				Plain	AS2												
	P					D	R	A	G	B				H			
0904	4	4850	40000			0.69	2	1.75	1.22	1	3.13	3.25	4.25	0.38	0.31	3.06	1.75
B5264	6	5250	60000			0.75	3	2	1.37	1.13	5.63	3.5	5	0.5	0.31	3.63	2
09060	6	6350	60000	11.2	15.5	0.75	2.75	2	1.5	1.13	4.38	3.25	4.5	0.5	0.38	3.5	2
D0906	6	6350	60000			0.75	2.75	2	1.5	1.13	4.38	3.25	4.5	0.5	0.38	3.5	2
EC1131	6	6350	60000	11.2	15.5	0.75	2.75	2	1.5	1.13	4.38	3.25	4.5	0.5	0.38	3.5	2
09061	6	6350	85000	12	19.5	0.75	2.25	2.25	1.5	1.13	4.38	3.25	4.5	0.5	0.38	3.5	2
B5259	6	6300	100000			0.75	3	2	1.5	1.13	4.38	3.25	4.5	0.5	0.38	3.63	2
B5269	6	7500	175000			0.87	2.75	2.25	1.5	1.25	5.63	3.5	5	0.5	0.38	3.75	2
SS2198	6	7650	100000			0.87	2.75	2.25	1.5	1.25	5.63	3.5	5	0.5	0.5	3.88	2
B5293	6	8300	140000			0.94	3	2.44	1.5	1.25	5.63	3.5	5	0.5	0.41	3.94	2
09063	6	8300	140000	15.2	20.8	0.94	3	2.38	1.5	1.25	5.63	3.5	5	0.5	0.41	3.94	2
A2198	6	8400	100000			0.87	3	2.38	1.53	1.25	5.63	3.5	5	0.5	0.5	3.91	2
B5256	6	8970	117000			1	75mm	2.5	1.81	1.5	5.56	5.5	7.25	0.75	0.38	3.63	2.36
09065	6	9275	160000			1.06	3	2.38	1.5	1.5	4.38	3.31	4.5	12mm	0.5	3.61	50mm
2600	6	11900	160000			1	3.5	3	2.65	1.49	5.75	3.5	5	0.5	0.38	4.75	2
B5276	6.05	5900	60000			0.75	2.63	2	1.38	1.13	4.4	3.25	4.5	0.5	0.38	3.38	2
B5267	6.06	7200	50000			1	3	2.25	1.31	1.5	4.41	3.25	4.5	0.5	0.38	3.41	2
B5509	9	7500	100000			0.87	3	2.25	1.5	1.25	7.13	3.5	5	0.5	0.38	4.12	2

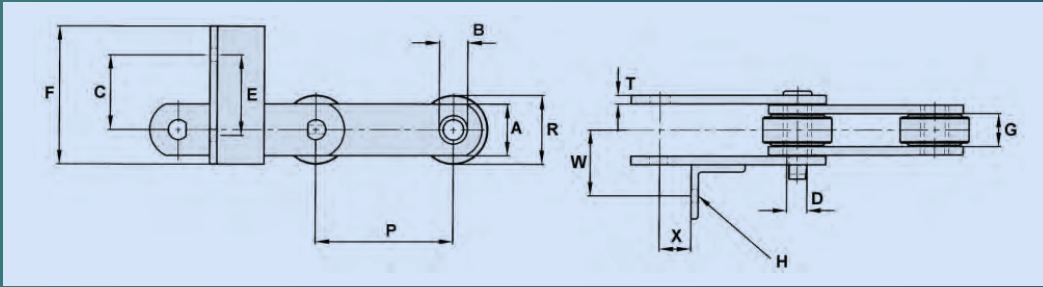
AS2 ATTACHMENTS



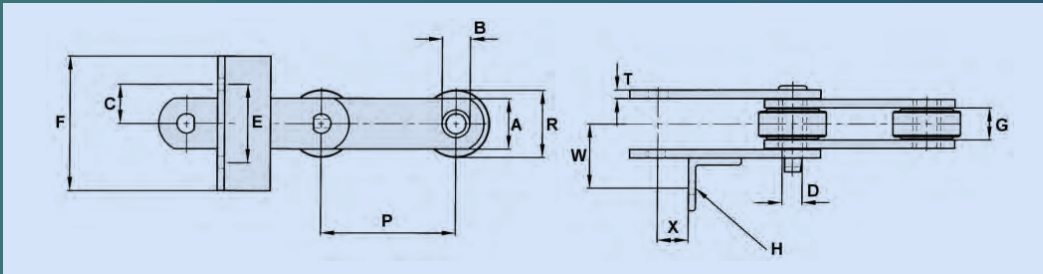
CHAIN No.	Pitch	Allow Load	UTS	Weight Lbs./ft		Pin Dia.	Roller Dia.	Sidebar Depth	Max. Gearing	Bush Dia.	C	E	F	Bolt Dia.	T	W	X
				Plain	AS2												
0904	4	4850	40000			0.69	2	1.75	1.22	1	3.13	3.25	4.25	0.38	0.31	3.06	1.75
B5096	4.02	4685	35000			0.69	2	1.5	1.31	1	3.13	3.25	4.25	0.38	0.31	2.75	1.75
09060	6	6350	60000	11.2	15.2	0.75	2.75	2	1.5	1.13	4.38	3.25	4.5	0.5	0.38	3.5	2
B5276	6.05	5900	60000	10.5	11.5	0.75	2.63	2	1.38	1	4.4	3.25	4.5	0.5	0.38	3.38	2
09061	6	6350	85000	12	19.5	0.75	2.75	2.25	1.5	1.13	4.38	3.25	4.5	0.5	0.38	3.5	2
B5280	6	6700	55000			0.87	3	2	1.44	1.25	5.63	3.5	5	0.5	0.38	3.63	2
B5234	6	7100	80000			0.87	3	2	1.37	1.25	5.63	3.5	5	0.5	0.38	3.63	2
B5311	6	7100	80000			0.87	3	2	1.38	1.25	5.63	3.5	5	0.5	0.38	3.63	2
D2184	6	7100	80000	12.3	17.9	0.87	3	2	1.38	1.25	5.63	3.5	5	0.5	0.38	3.63	2
ET2184*	6	7100	80000	11.6	17	0.87	3	2	1.38	1.25	5.63	3.5	5	0.5	0.38	3.63	2
DN2184	6	7100	80000	12.6	17.5	0.87	3	2	1.38	1.25	5.63	3.5	5	0.5	0.38	3.63	2
1796	6	7500	100000	12.6	17.5	0.87	2.75	2.25	1.5	1.25	4.38	3.25	4.5	0.5	0.38	3.5	2
SS2198	6	7650	100000			0.87	2.75	2.25	1.5	1.25	5.63	3.5	5	0.5	0.5	3.88	2
09063	6	8300	140000	15.2	20.8	0.94	3	2.38	1.5	1.25	5.63	3.5	5	0.5	0.41	3.94	2
5184	6	10000	160000			1.1	3	2.5	2.33	1.49	5.63	3.5	5	0.5	0.5	3.82	2
9184	6	8500	175000	17.4	21.7	0.94	3	2.5	1.56	1.38	5.63	3.5	5	0.5	0.5	3.91	2
9185	6	8500	175000	18.9	23.2	0.94	3.5	2.5	1.56	1.38	5.63	3.5	5	0.5	0.5	3.91	2
F9184	6	8500	175000	17.4	21.7	0.94	3	2.5	1.56	1.38	5.63	3.5	5	0.5	0.5	3.91	2
SS2186	6	9500	175000	19.5	25	1	3.5	2.5	1.5	1.38	5.63	3.5	5	0.5	0.5	3.63	2
B5313	6	10550	140000	18.3	23.5	1.16	3	2.5	1.58	1.5	5.63	3.5	5	0.5	0.5	4	2
8184	8	10700	167000	19	23.9	1	3.5	2.75	1.81	1.5	6.63	3.5	5	0.5	0.5	4.22	2
326	8	10000	150000	22.7	37.4	1	4	80mm	2.88	1.5	7.28	4.72	6.89	0.63	0.5	5.51	2.36
B5509	9	7500	100000			0.87	3.5	2.25	1.5	1.25	7.13	3.5	5	0.5	0.38	4.12	2

* ET2184 is a cranked flat design sidebar.

F TYPE ATTACHMENTS

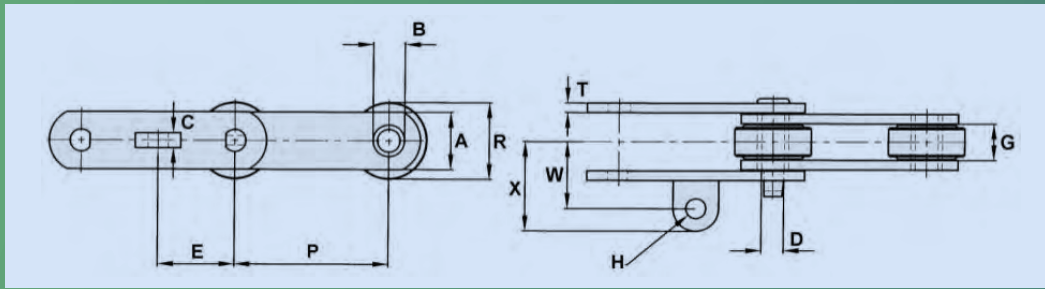


CHAIN No.	Pitch	Allow Load	UTS	Pin Dia.	Roller Dia.	Sidebar Depth	Max Gearing	Bush Dia.	C	E	F	Bolt Dia.	T	W	X
	P			D	R	A	G	B				H			
B5278	6	7650	77000	0.94	3.5	2.5	1.56	1.25	3.25	3.5	6	12mm	0.38	2.87	1.38
09063	6	8300	140000	0.94	3	2.38	1.5	1.25	3.25	3.5	6	0.5	0.41	2.87	1.23

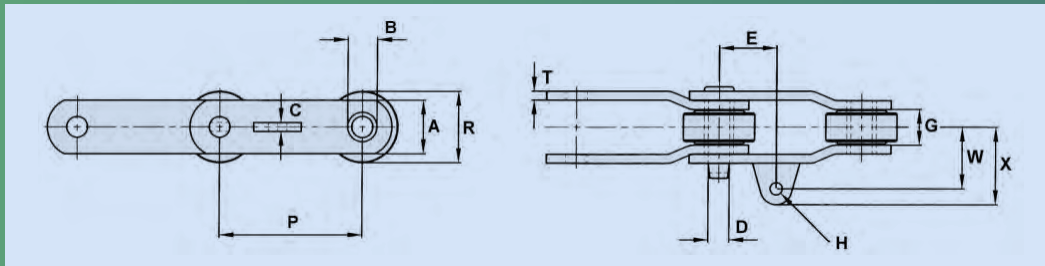


CHAIN No.	Pitch	Allow Load	UTS	Pin Dia.	Roller Dia.	Sidebar Depth	Max Gearing	Bush Dia.	C	E	F	Bolt Dia.	T	W	X
	P			D	R	A	G	B				H			
B5278	6	7650	77000	0.94	3.5	2.5	1.56	1.25	1.75	3.5	5	12mm	0.38	3.65	3

LUG ONLY ATTACHMENTS

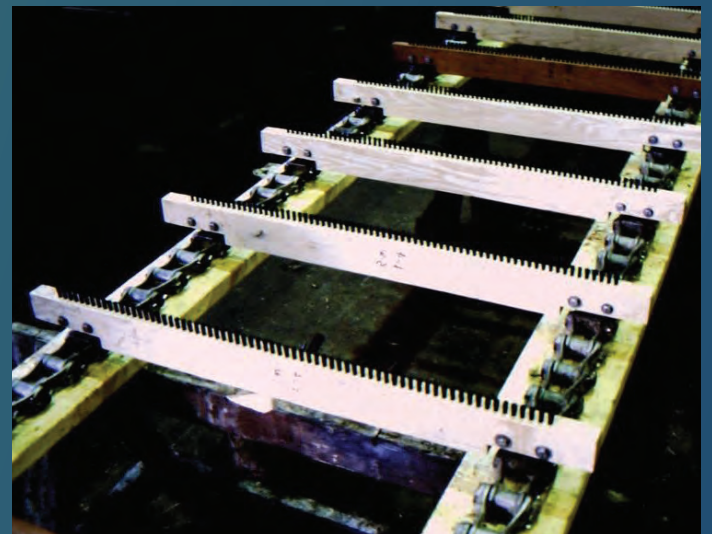
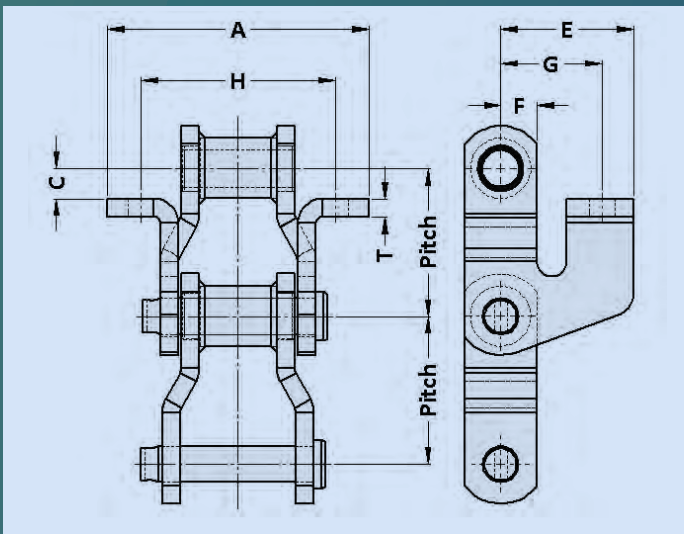
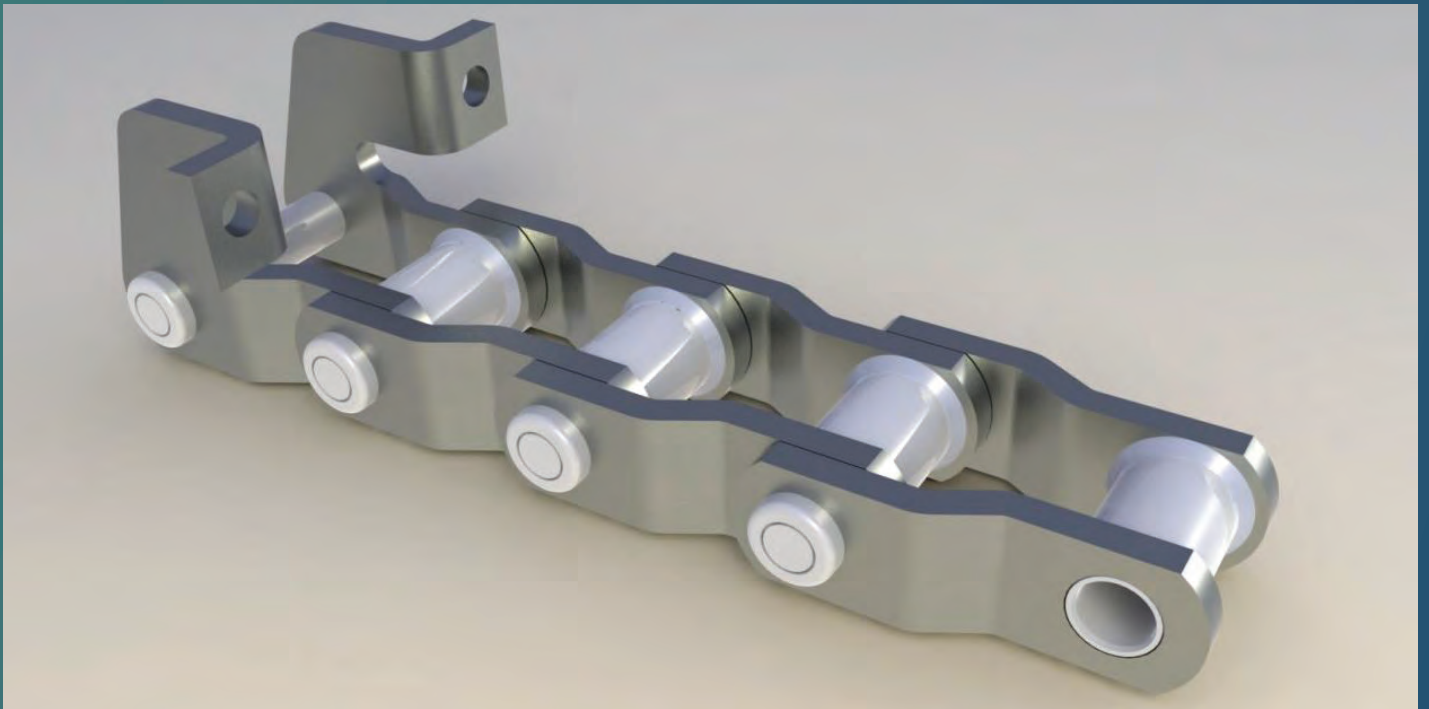


CHAIN No.	Pitch	Allow Load	UTS	Pin Dia.	Roller Dia.	Sidebar Depth	Max Gearing	Bush Dia.	C	E	Bolt Dia.	T	W	X
	P			D	R	A	G	B			H			
B5262	6	6600	100000	0.75	2.75	2	1.56	1.13	15mm	3	0.63	0.38	2.75	3.73
B5273	6	7650	70500	0.88	2.75	60mm	1.51	1.38	30mm	3	0.75	10mm	2.89	3.83
B5294	6	5740	49000	0.75	2.75	2	1.69	1.13	12mm	3	18mm	0.25	3.53	4.39



CHAIN No.	Pitch	Allow Load	UTS	Pin Dia.	Roller Dia.	Sidebar Depth	Max Gearing	Bush Dia.	C	E	Bolt Dia.	T	W	X
	P			D	R	A	G	B			H			
B5515	9	8500	120000	1	3.5	2.25	1.5	1.5	15mm	4.5	0.75	0.38	3.12	4.12

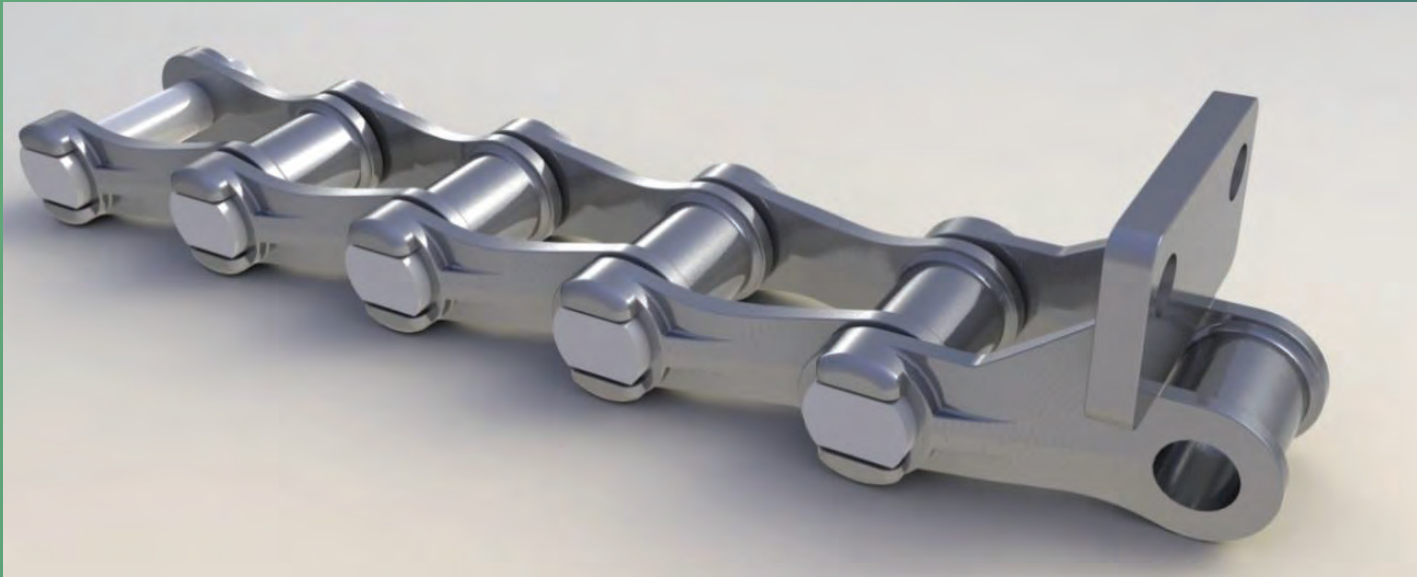
JUICE STRAINER (CUSH-CUSH) CHAINS



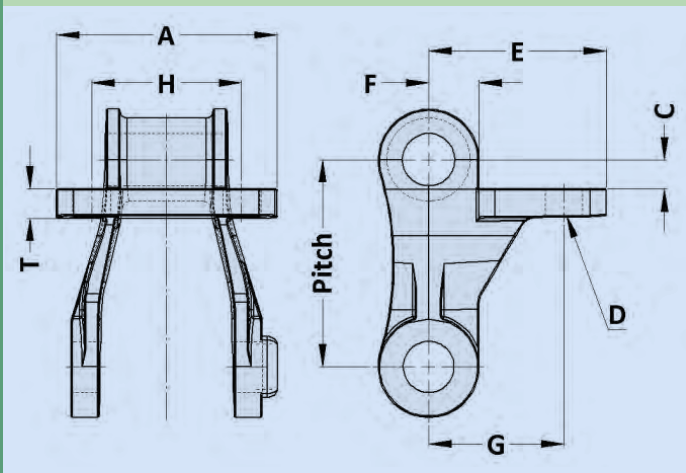
CHAIN No.	Pitch	Allowable Chain Pull	Breaking Load		Weight / Ft		Pin		Barrel			Link Depth	A	B	C	D	E	F	G	H	T
			Lb	Kg	Plain	F2/29	Dia	Length	Dia	Width Inside	Width Outside										
488	2.61	1800	11000	4994	3.5	6.2	0.44	3.06	0.88	0.75	1.56	1	2.94	0.88	1.56	0.31	2	0.5	1.38	2.03	0.31
4103*	3.07	3500	22000	9988	6.2	8.8	0.75	3.63	1.25	1	1.84	1.5	3	-	0.44	0.38	2.63	0.75	2.02	2.44	0.44
2103	3.07	4900	40000	13140	5.9	9.3	0.75	3.13	1.25	1.38	1.88	1.5	4.88	-	0.63	0.38	2.75	0.75	2.09	3.5	0.25

* 4103 available in stainless.

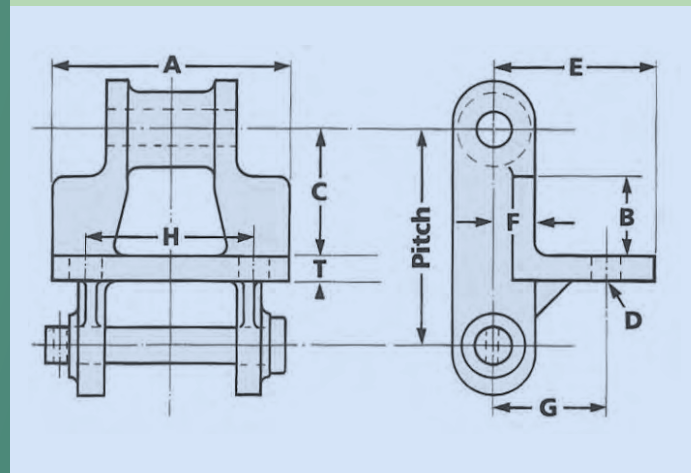
TRASH CONVEYOR CHAINS



4103 F29

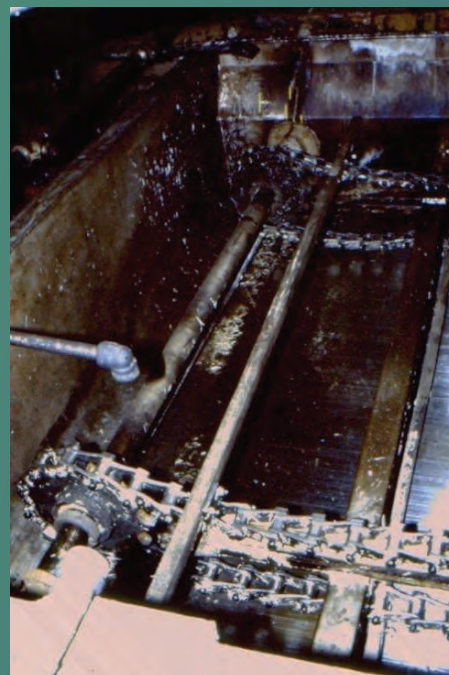


488



Pintle chains for use primarily in juice strainer and trash elevator applications.

Where the application requires resistance to severe corrosion STAINLESS STEEL versions can be selected.



SLATS & SPROCKETS

Remember

When seeking accessories advise the chain number they are to work with. The following information supplied with enquiry or order will avoid delay and ensure supplies are to your requirements.

Slats

Style, length and thickness, if required pre-punched advise chain centres.

Sprockets

Number of teeth and bore detail, because wheels are made to order and boss made to suit we need to know the final bore even if wheels are to be supplied un-machined. Unless instructed otherwise central bosses and rectangular taper keyways will be standard.

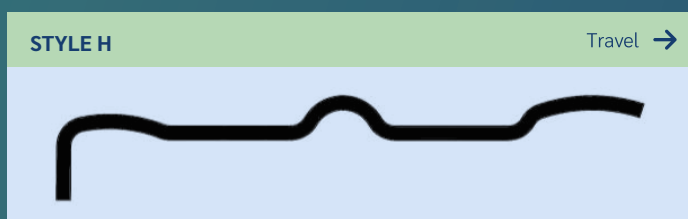
Slats

Our top quality mild steel slats are available for our Main, Auxiliary and intermediate carrier chains. Pressed steel channels with or without central corrugation are available for bagasse conveyors.

Manufactured using a multi pressure progressive forming process for controlled linear and profile accuracy, jig punched holes for consistent results all ensure a top quality product.



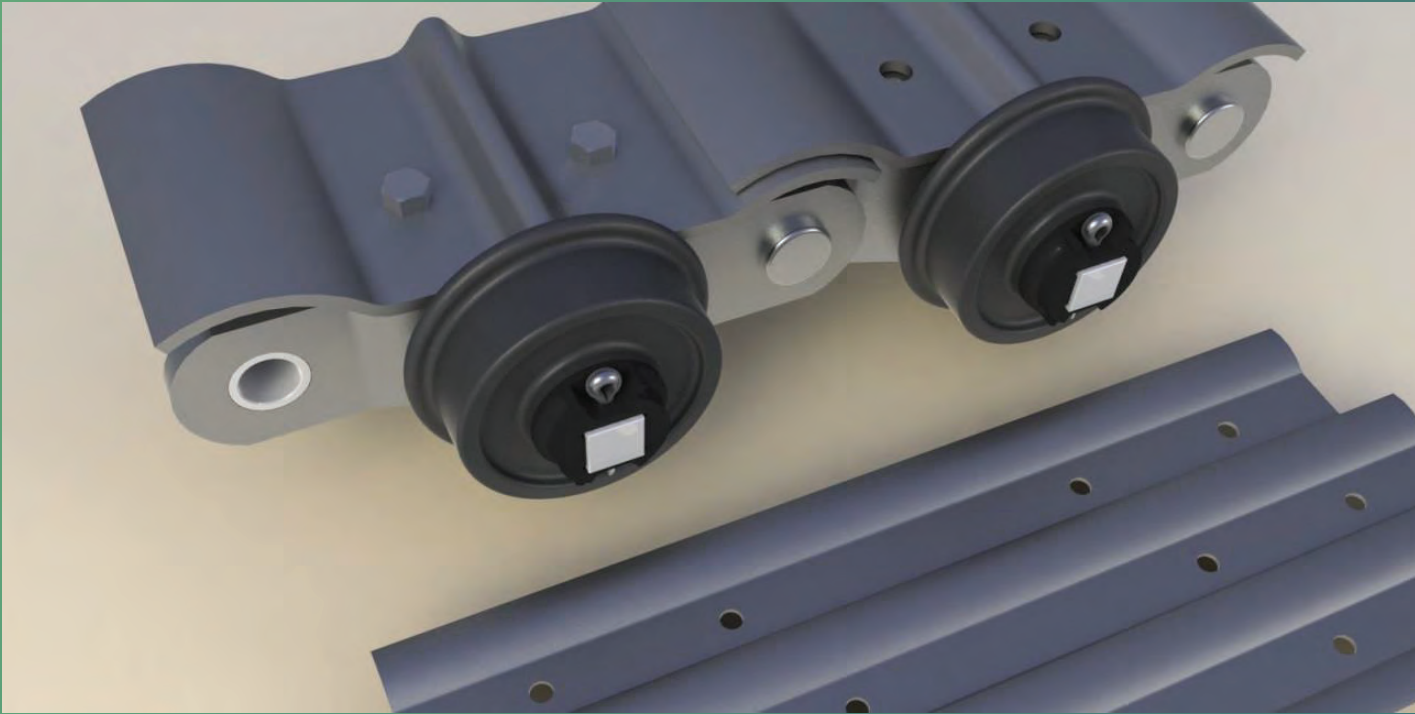
For Cane Carriers



For Intermediate Carriers



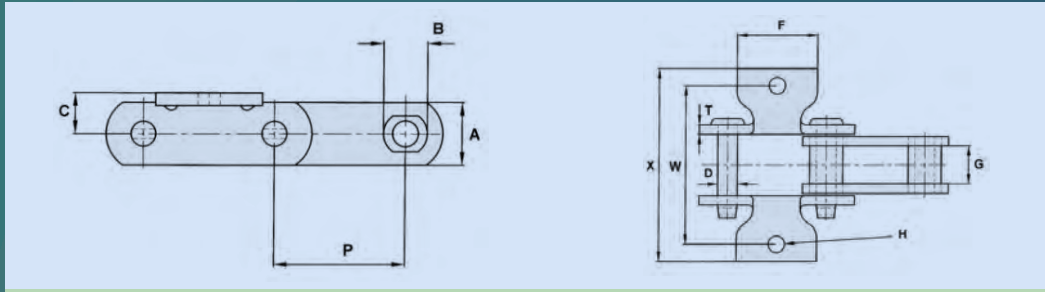
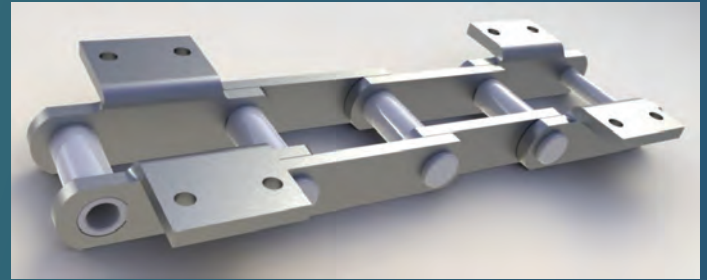
SPROCKETS



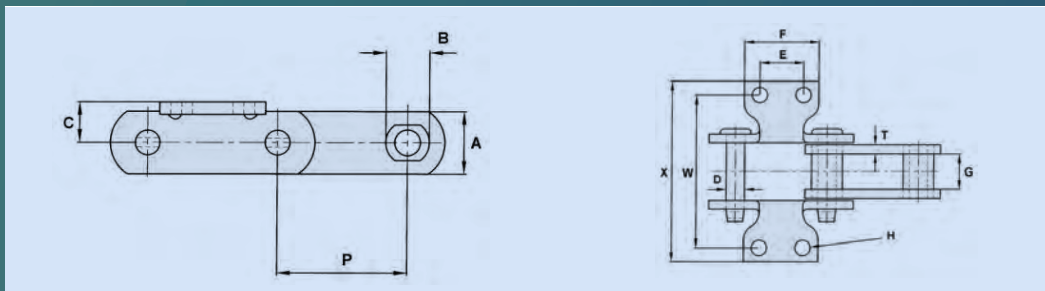
All Ewart's Sugar chain wheels are now manufactured from carbon steel plate EN8 (equates to the analysis of SAE1040). Very accurate profiles are assured by magic eye guided flame cutters. Mild steel bosses are made to suit shaft size used to avoid unnecessary weight, and are argon arc welded both sides to full depth plate to complete the fabrication. The assembly is then furnace normalised to remove stresses set up in manufacture. Teeth sides above the PCD are chamfered to ensure easy entry between sidebars. After this process, the teeth surfaces can be flame hardened to resist wear in very arduous conditions but in roller chain applications we find this is rarely required.

SUGAR ELEVATOR CHAINS

Many of Ewart's standard products can be used in sugar elevators, a small cross section is shown here.



K1



K2

K1 ATTACHMENTS

CHAIN No.	Pitch	Allow Load	UTS	Pin Dia.	Sidebar Depth	Maximum Gearing	Barrel Dia.	C	F	Bolt Dia.	T	W	X
	P			D	A	G	B			H			
SS188	2.609	2800	25000	0.5	1.25	1.06	0.87	0.81	2.13	0.38	0.25	3.75	2.61

K2 ATTACHMENTS

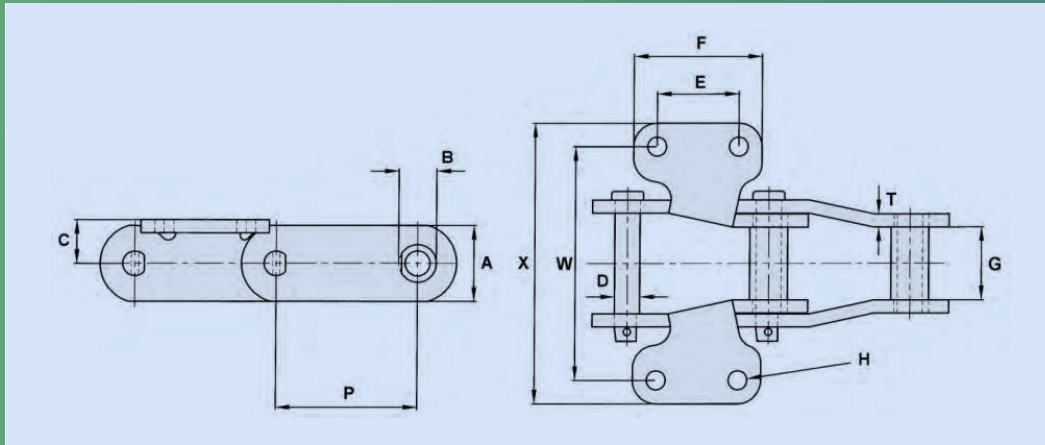
CHAIN No.	Pitch	Allow Load	UTS	Pin Dia.	Sidebar Depth	Maximum Gearing	Barrel Dia.	C	E	F	Bolt Dia.	T	W	X
	P			D	A	G	B				H			
SS188	2.609	2800	25000	0.5	1.25	1.06	0.88	0.81	1.25	2.13	0.38	0.25	4.19	5.13
SS131	3.075	4500	40000	0.62	1.5	1.31	1.25	1	1.5	2.63	0.5	0.38	4.13	5.13
SS102B*	4	6300	40000	0.62	1.5	2.13	1	1	1.75	2.69	0.38	0.38	5.31	6.66
SS111	4.75	8850	75000	0.75	2	2.63	1.44	1.5	2.31	3.63	0.38	0.38	6.25	8.06
SS110	6	6300	40000	0.62	1.5	2.13	1.25	1	1.75	2.88	0.38	0.38	5.31	6.66
BS239	6	8860	75000	0.75	2	2.62	1.44	1.5	2.31	4.5	0.5	0.38	6.25	8.38

* SS102B CAN BE SUPPLIED WITH 1.1/2" DIA. ROLLERS IF REQUIRED

The tabular dimensions and weights are approximate and are not binding. Design improvements may result in variation from the published figures and verification is recommended.

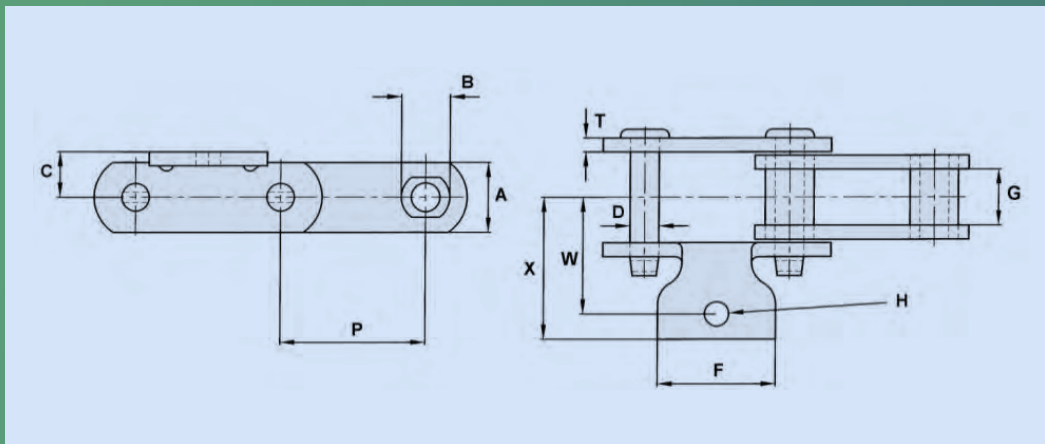
STEEL BUSHED CHAIN

K2 ATTACHMENTS



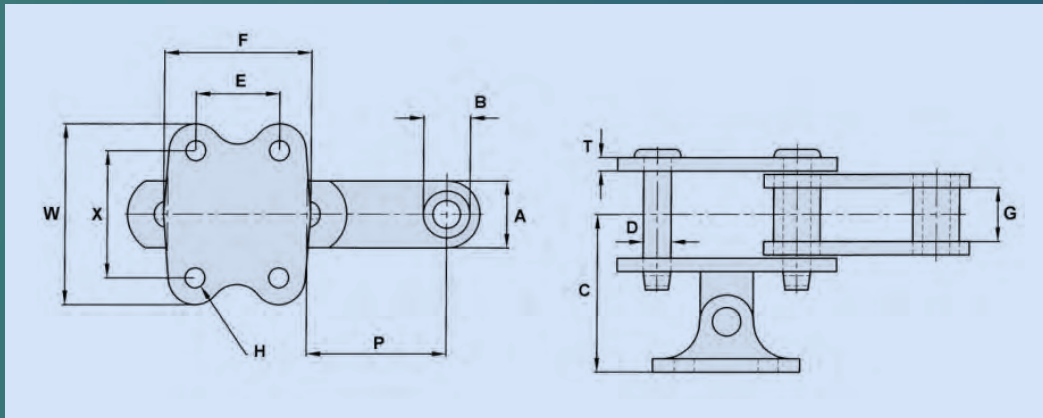
CHAIN No.	Pitch	Allow Load	UTS	Pin Dia.	Sidebar Depth	Max Gearing	Barrel Dia.	C	E	F	Bolt Dia.	T	W	X
	P			D	A	G	B				H			
7140X	6.06	15800	70000	1.06	3.25	3.13	1.63	1.88	3.5	5.5	0.62	0.56	10	12

A1 ATTACHMENT



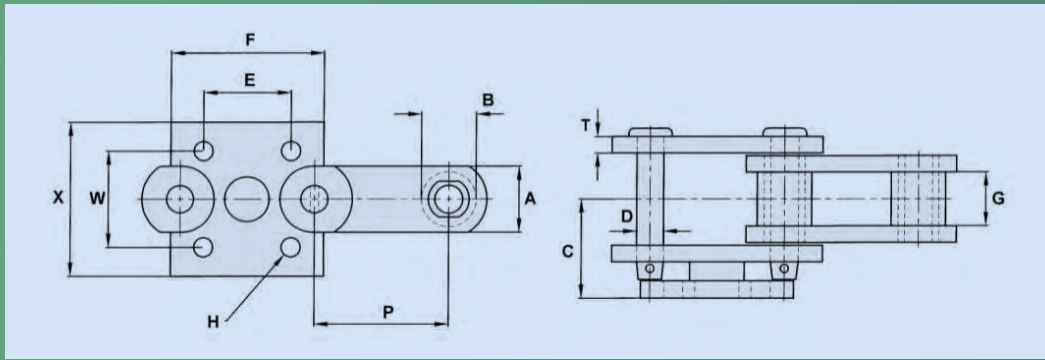
CHAIN No.	Pitch	Allow Load	UTS	Pin Dia.	Sidebar Depth	Max Gearing	Barrel Dia.	C	F	Bolt Dia.	T	W	X
	P			D	A	G	B			H			
SS188	2.609	2800	25000	0.5	1.25	1.06	0.87	0.81	2.13	0.38	0.25	1.87	1.56

AS20 ATTACHMENT

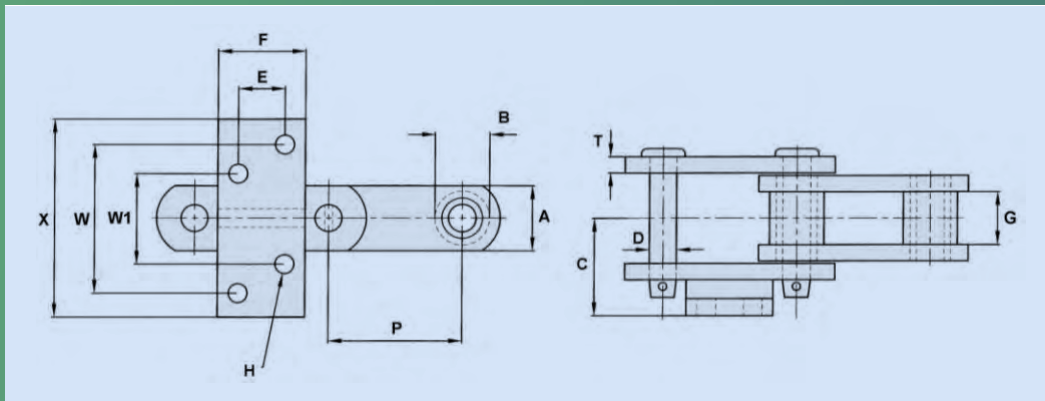


CHAIN No.	Pitch	Allow Load	UTS	Pin Dia.	Sidebar Depth	Max Gearing	Barrel Dia.	C	E	F	Bolt Dia.	W	X
	P			D	A	G	B				H		
SS188	2.609	2800	25000	0.5	1.25	1.06	0.88	2.94	1.56	2.75	0.31	3.19	2.19
SS102B	4	6300	40000	0.62	1.5	2.13	1	3.89	1.69	3.13	0.31	3.5	2.44
SS110	6	6300	40000	0.62	1.5	2.13	1.25	4.25	2.5	4	0.38	3.5	2.25
B5239	6	8860	75000	0.75	2	2.62	1.44	4.69	2.5	3.75	0.5	4.25	3

G20 ATTACHMENT



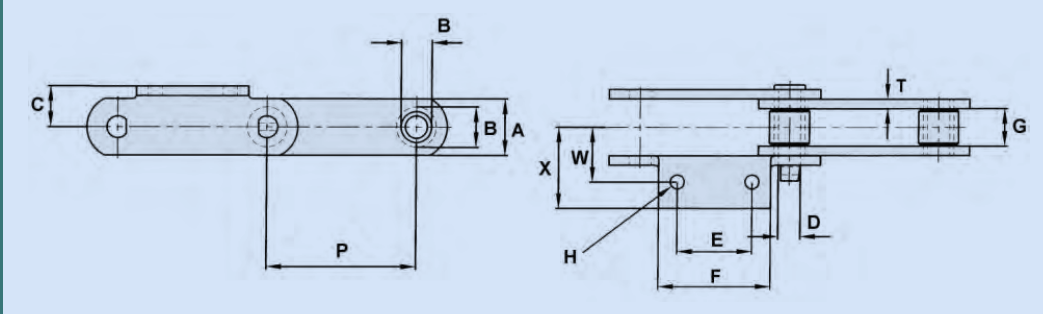
CHAIN No.	Pitch	Allow Load	UTS	Pin Dia.	Sidebar Depth	Max Gearing	Barrel Dia.	C	E	F	Bolt Dia.	W	X
	P			D	A	G	B				H		
SS131	3.075	4500	40000	0.62	1.5	1.31	1.25	2.25	2	3.5	0.38	2.19	3.5



CHAIN No.	Pitch	Allow Load	UTS	Pin Dia.	Sidebar Depth	Maximum Gearing	Bush Dia.	C	E	F	Bolt Dia.	W	W1	X
	P			D	A	G	B				H			
SS103	3.075	4100	25000	0.62	1.5	1.9	1.22	2.06	0.63	2	0.38	3	1.75	4

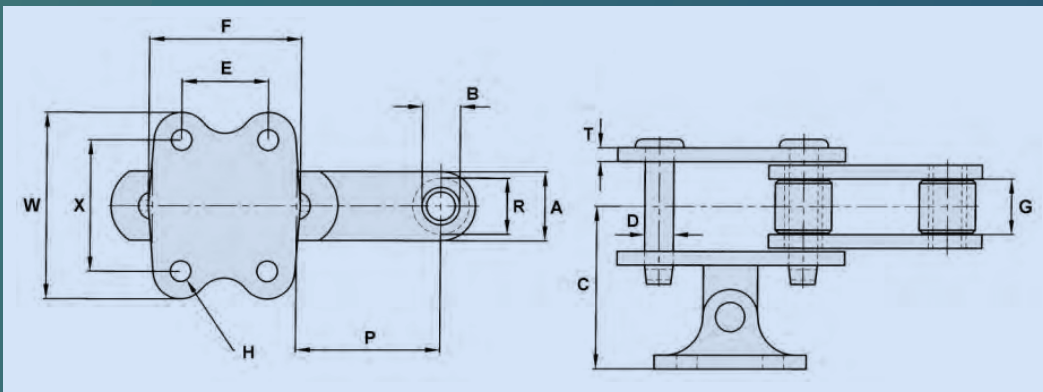
STEEL ROLLER CHAIN

A2 ATTACHMENT



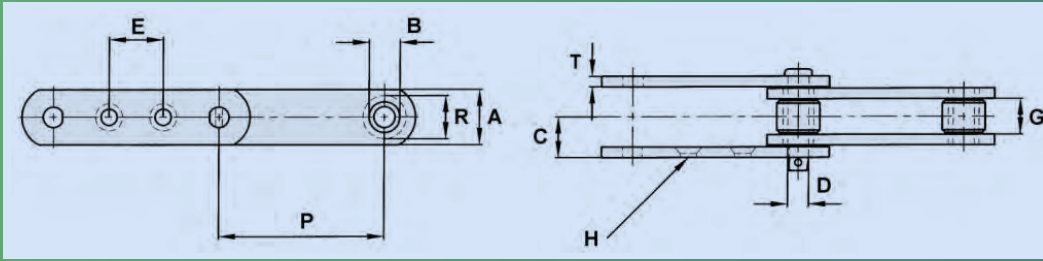
CHAIN No.	Pitch	Allow Load	UTS	Pin Dia.	Roller Dia.	Sidebar Depth	Max Gearing	Bush Dia.	C	E	F	Bolt Dia.	T	W	X
	P			D	R	A	G	B				H			
0904E	4	4850	40000	0.69	1.25	1.75	1.22	1	1.25	1.44	2.63	0.38	0.31	1.75	2.06

AS20 ATTACHMENT



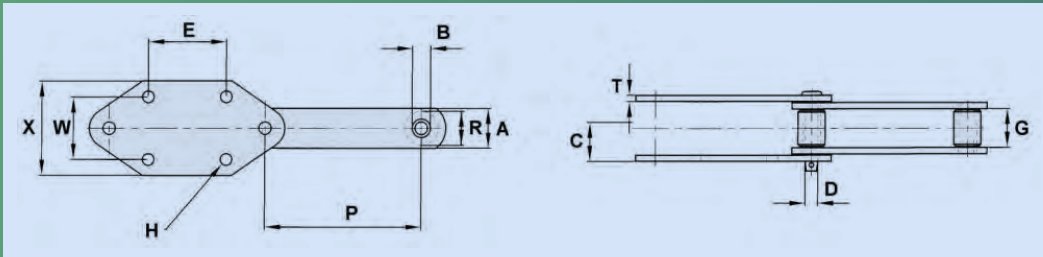
CHAIN No.	Pitch	Allow Load	UTS	Pin Dia.	Roller Dia.	Sidebar Depth	Maximum Gearing	Bush Dia.	C	E	F	Bolt Dia.	T	W	X
	P			D	R	A	G	B				H			
0904E	4	4850	40000	0.69	1.25	1.75	1.22	1	3.13	2	3.63	0.38	0.31	3.56	2.19
09060E	6	6350	60000	0.75	1.63	2	1.5	1.13	4.13	2.5	3.75	0.5	0.38	4.25	3
1796E	6	7500	100000	0.87	1.63	2.25	1.5	1.25	4.13	2.5	3.75	0.5	0.38	4.25	3

G2 ATTACHMENT



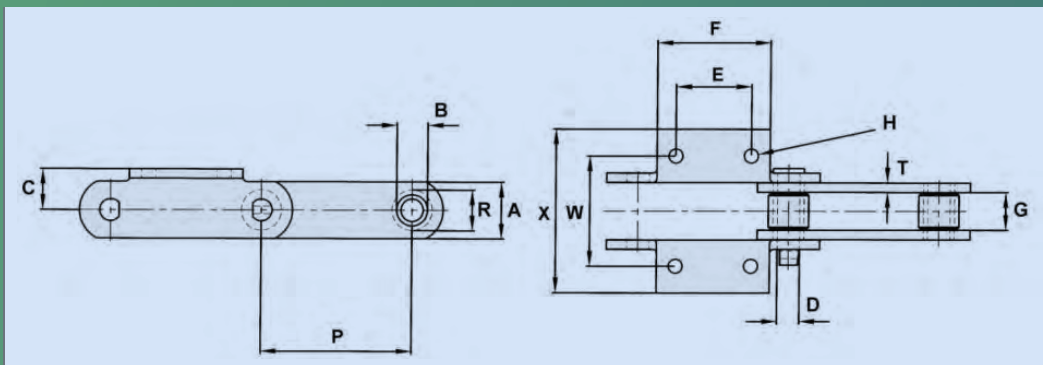
CHAIN No.	Pitch	Allow Load	UTS	Pin Dia.	Roller Dia.	Sidebar Depth	Max Gearing	Bush Dia.	C	E	Bolt Dia.	T
	P			D	R	A	G	B			H	
0904E	4	4850	40000	0.69	1.25	1.75	1.22	1	1.25	1.44	0.38	0.31

G4 ATTACHMENT



CHAIN No.	Pitch	Allow Load	UTS	Pin Dia.	Roller Dia.	Sidebar Depth	Max Gearing	Bush Dia.	C	E	Bolt Dia.	T	W	X
	P			D	R	A	G	B			H			
B5440	200mm	4500	45000	0.62	1.38	1.75	2.09	0.94	1.85	3.94	15MM	0.31	3.94	5.75
B5440	200mm	4500	45000	0.62	1.38	1.75	2.09	0.94	1.36	3.94	15MM	0.31	3.15	4.75

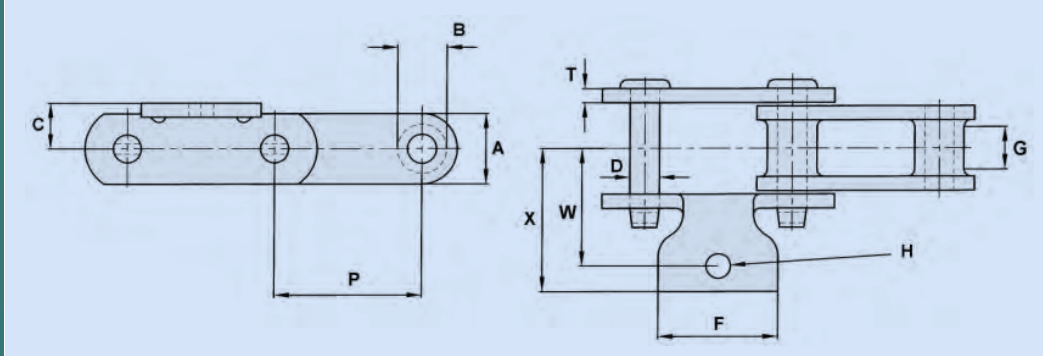
K2 ATTACHMENT



CHAIN No.	Pitch	Allow Load	UTS	Pin Dia.	Roller Dia.	Sidebar Depth	Max Gearing	Bush Dia.	C	E	F	Bolt Dia.	T	W	X
	P			D	R	A	G	B				H			
0904E	4	4850	40000	0.69	1.25	1.75	1.22	1	1.25	1.44	2.63	0.38	0.31	3.5	4.13
09060E	6	6350	60000	0.75	1.63	2	1.5	1.13	1.63	3	4.5	0.5	0.38	4.38	6.75
1796E	6	7500	100000	0.87	1.63	2.25	1.5	1.25	1.63	3	4.5	0.5	0.38	4.38	6.5

COMBINATION CHAIN

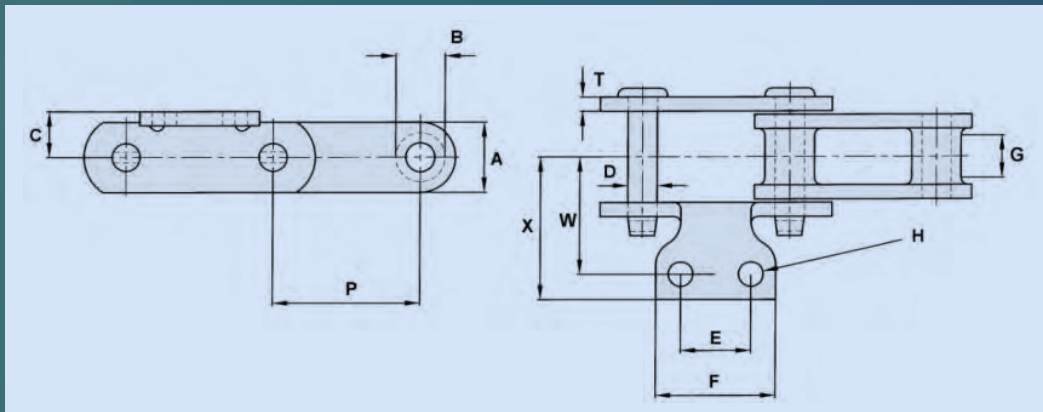
A1 ATTACHMENT



CHAIN No.	Pitch	Allow Load	UTS	Pin Dia.	Sidebar Depth	Max Gearing	Barrel Dia.	C	F	Bolt Dia.	T	W	X
	P			D	A	G	B			H			
C188	2.609	2000	17500	0.5	1.25	0.75	0.87	0.81	2.13	0.38	0.25	1.88	2.56

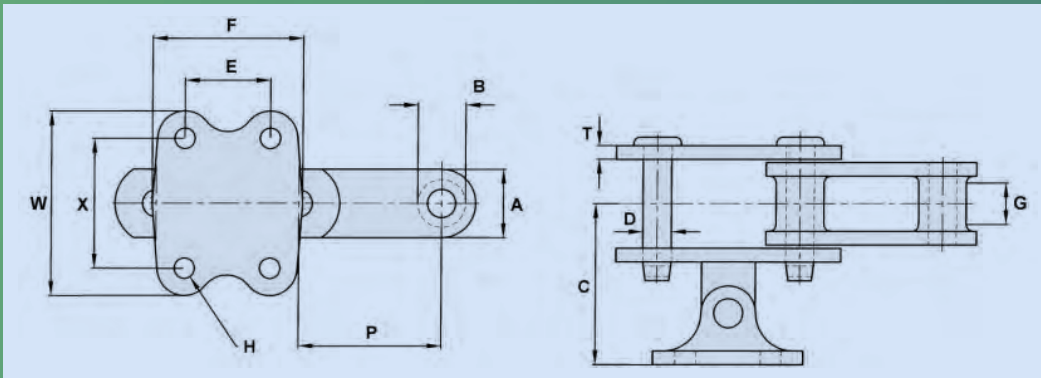
ATTACHMENTS ARE ONLY AVAILABLE ON THE OUTER LINK

A2 ATTACHMENT



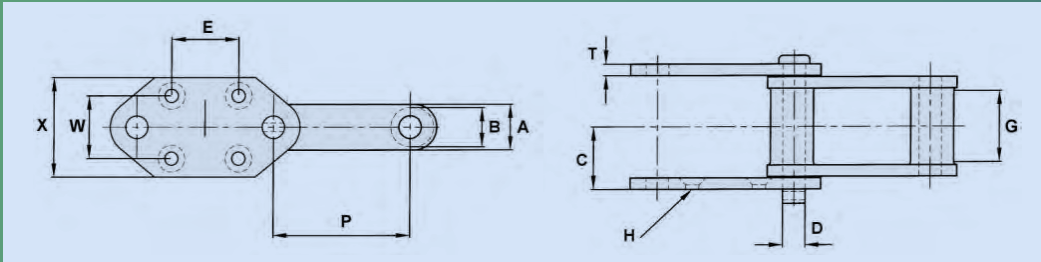
CHAIN No.	Pitch	Allow Load	UTS	Pin Dia.	Sidebar Depth	Max Gearing	Barrel Dia.	C	E	F	Bolt Dia.	T	W	X
	P			D	A	G	B				H			
C188	2.609	2000	17500	0.5	1.25	0.75	0.87	0.81	1.25	2.13	0.38	0.25	2.09	2.56
C131	3.075	3220	27500	0.62	1.5	1.13	1.25	1	1.5	2.63	0.5	0.38	2.06	2.63
C102B	4	4200	27500	0.62	1.5	1.75	1	1	1.75	2.69	0.38	0.38	2.66	3.33

AS20 ATTACHMENT



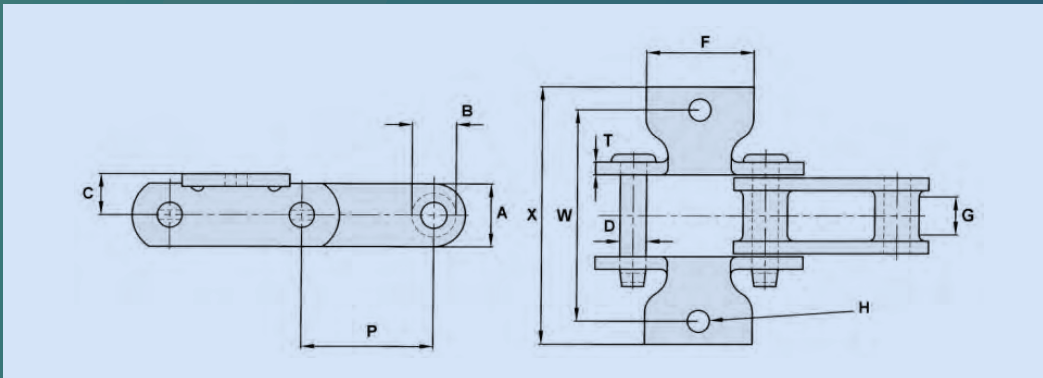
CHAIN No.	Pitch	Allow Load	UTS	Pin Dia.	Sidebar Depth	Max Gearing	Barrel Dia.	C	E	F	Bolt Dia.	W	X
	P			D	A	G	B				H		
C188	2.609	2000	17500	0.5	1.25	0.75	0.87	2.94	1.56	2.75	0.31	3.19	2.19
C131	3.075	3220	27500	0.62	1.5	1.13	1.25	3.47	1.69	3.13	0.31	3.5	2.44
C102B	4	4200	27500	0.62	1.5	1.75	1	3.89	1.69	3.13	0.31	3.5	2.44
C111	4.76	6000	36000	0.75	1.75	2.25	1.44	4.72	2.5	3.75	0.5	4.25	3
C110	6	4200	27500	0.62	1.5	1.75	1.25	4.25	2.5	4	0.38	3.5	2.25

G4 ATTACHMENT



CHAIN No.	Pitch	Allow Load	UTS	Pin Dia.	Sidebar Depth	Max Gearing	Barrel Dia.	C	E	Bolt Dia.	T	W	X
	P			D	A	G	B			H			
C132	6.05	10000	60000	1	2	2.88	1.72	2.72	75MM	15MM	0.5	70MM	4.38

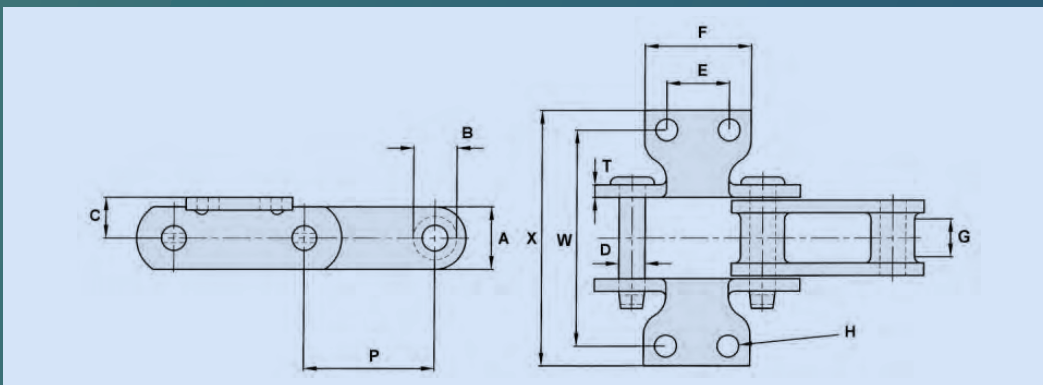
K1 ATTACHMENT



CHAIN No.	Pitch	Allow Load	UTS	Pin Dia.	Sidebar Depth	Max Gearing	Barrel Dia.	C	F	Bolt Dia.	T	W	X
	P			D	A	G	B			H			
C188	2.609	2000	17500	0.5	1.25	0.75	0.87	0.81	2.13	0.38	0.25	3.75	5.13

ATTACHMENTS ARE ONLY AVAILABLE ON THE OUTER LINK

K2 ATTACHMENT

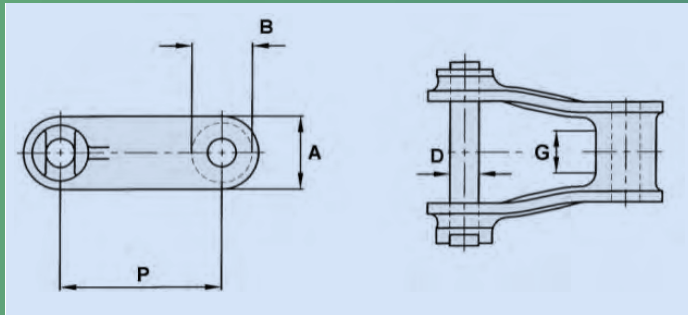


CHAIN No.	Pitch	Allow Load	UTS	Pin Dia.	Sidebar Depth	Max Gearing	Barrel Dia.	C	E	F	Bolt Dia.	T	W	X
	P			D	A	G	B				H			
C188	2.609	2000	17500	0.5	1.25	0.75	0.87	0.81	1.25	2.13	0.38	0.25	4.19	5.13
C131	3.075	3220	27500	0.62	1.5	1.13	1.25	1	1.5	2.63	0.5	0.38	4.13	5.25
C102B*	4	4200	27500	0.62	1.5	1.75	1	1	1.75	2.69	0.38	0.38	5.31	6.66
C111	4.76	6000	36000	0.75	1.75	2.25	1.44	1.13	2.31	3.63	0.38	0.38	6.25	7.5
C110	6	4200	27500	0.62	1.5	1.75	1.25	1	1.75	2.87	0.38	0.38	5.31	6.69
C132	6.05	10000	60000	1	2	2.88	1.72	1.25	2.75	4	0.5	0.5	7.5	9.18

*K2 ATTACHMENTS FOR CENTRE LINK ARE ONLY AVAILABLE ON C102B

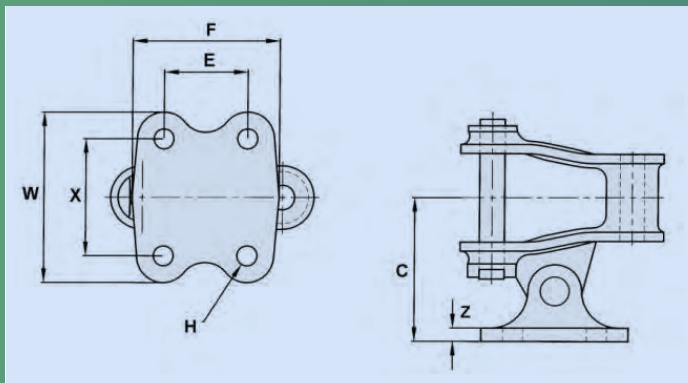
CAST CHAIN

GREY PIN CHAINS



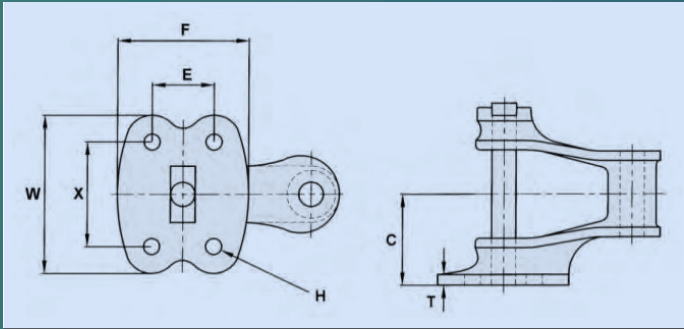
CHAIN No.	Pitch	Allow Load	UTS	Pin Diameter	Sidebar Depth	Maximum Gearing	Barrel Diameter
	P			D	A	G	B
503	3.02	2810	20000	0.56	1.38	1.13	1.09
504	4.06	4500	27500	0.63	1.69	1.75	1.31
578	2.63	1780	15000	0.44	1.19	0.88	0.97

AS20 ATTACHMENT



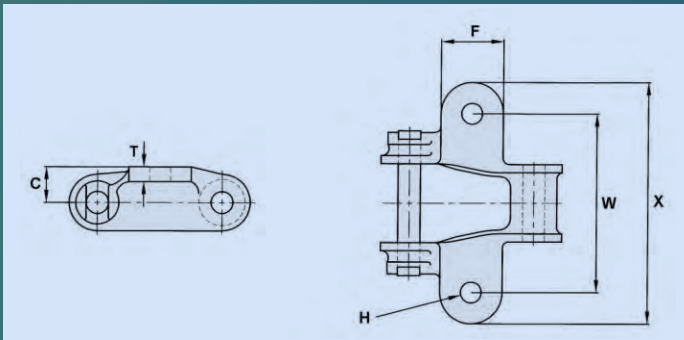
CHAIN No.	C	E	F	Bolt Diameter	W	X	Z
				H			
503	2.88	1.69	3.13	0.31	3.5	2.44	0.28
504	3.81	2.5	4.13	0.38	3.69	2.25	0.44
578	2.69	1.56	2.75	0.31	3.19	2.19	0.25

G20 & G22 ATTACHMENT



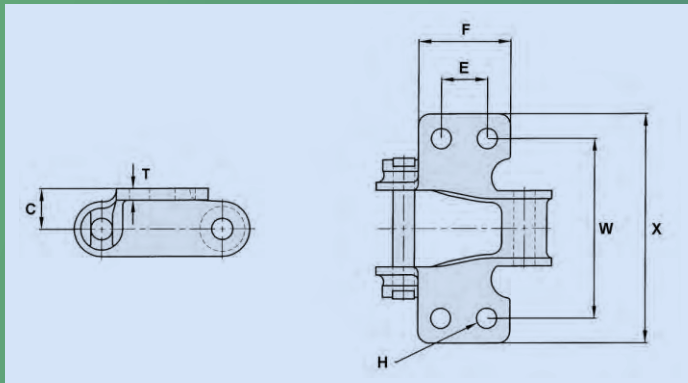
CHAIN No.	C	E	F	Bolt Diameter	T	W	X
				H			
503G20	2.13	1.69	3.06	0.31	0.25	3.44	2.44
504G20	2.75	1.88	3.5	0.38	0.31	3.63	2.5
578G22	2.19	1.56	3	0.31	0.22	3.5	2.19

K1 ATTACHMENT



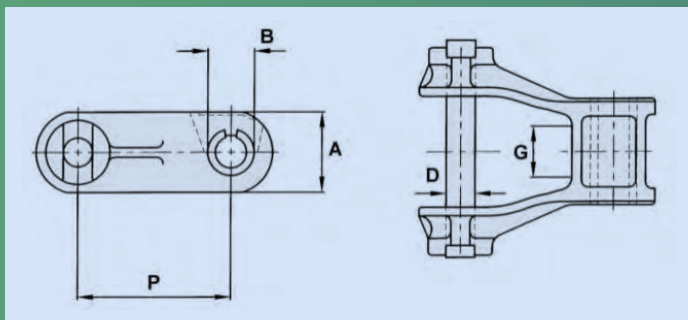
CHAIN No.	C	F	Bolt Diameter	T	W	X
			H			
503	0.88	1.63	0.38	0.31	4.38	5.63
578	0.75	1.31	0.38	0.31	3.81	5.13

K2 ATTACHMENT



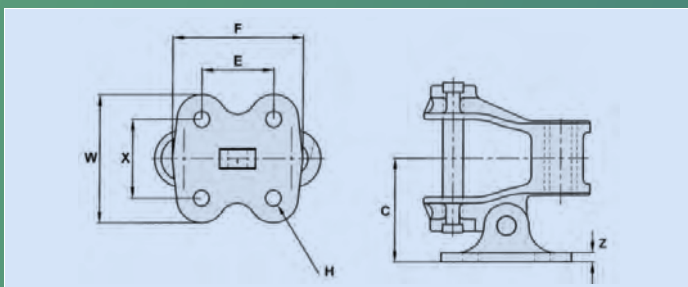
CHAIN No.	C	E	F	Bolt Diameter	T	W	X
				H			
578	0.88	1	2.06	0.38	0.25	3.88	5
503	0.88	1.81	2.94	0.38	0.28	5.38	6.88
504	1	1.5	2.63	0.5	0.5	5.81	7

LEY BUSH CHAINS



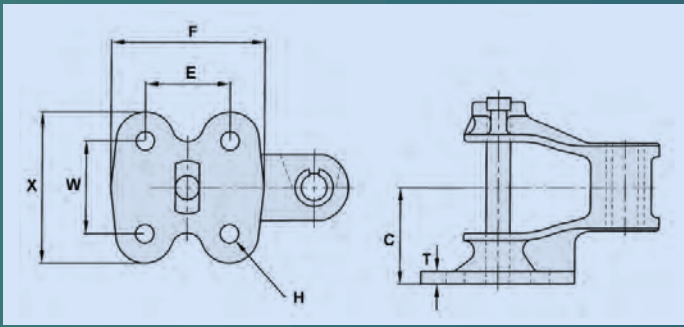
CHAIN No.	Pitch	Allow Load	UTS	Pin Diameter	Sidebar Depth	Maximum Gearing	Barrel Diameter
	P			D	A	G	B
603	3	3300	20000	0.56	1.56	1.13	0.88

AS20 ATTACHMENT



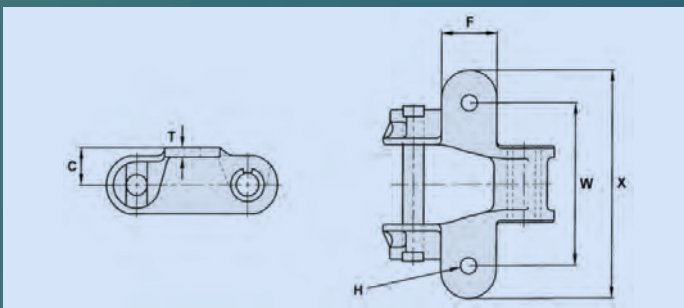
CHAIN No.	C	E	F	Bolt Diameter	W	X	Z
				H			
603	2.81	2	3.63	0.38	3.56	2.13	0.25

G20 ATTACHMENT



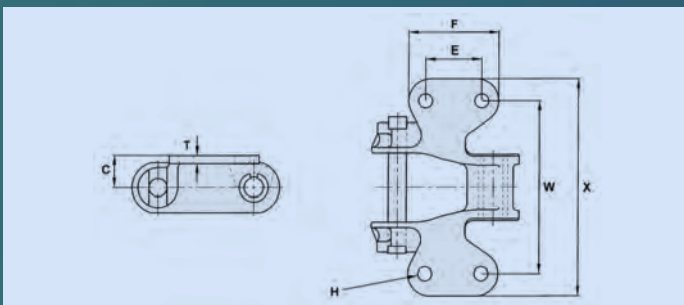
CHAIN No.	C	E	F	Bolt Diameter	T	W	X
				H			
603G20	2.25	2	3.63	0.38	0.31	2.19	3.44

K1 ATTACHMENT



CHAIN No.	C	F	Bolt Diameter	T	W	X
			H			
603	1	1.5	0.38	0.25	4.38	6.13

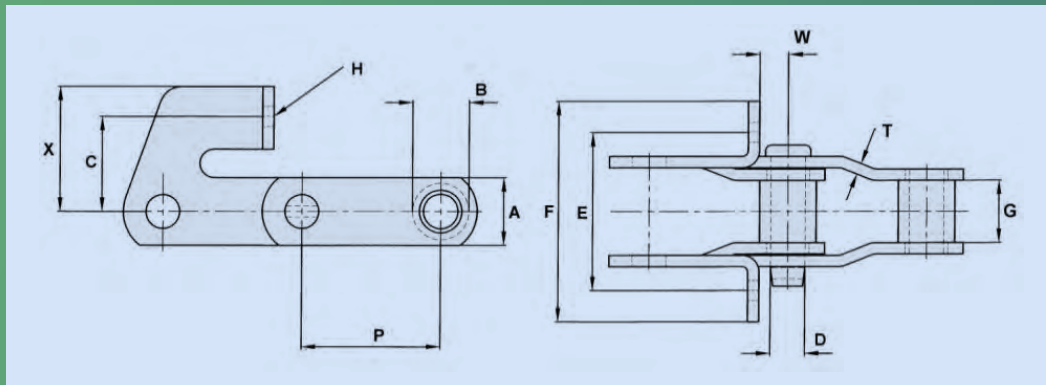
K2 ATTACHMENT



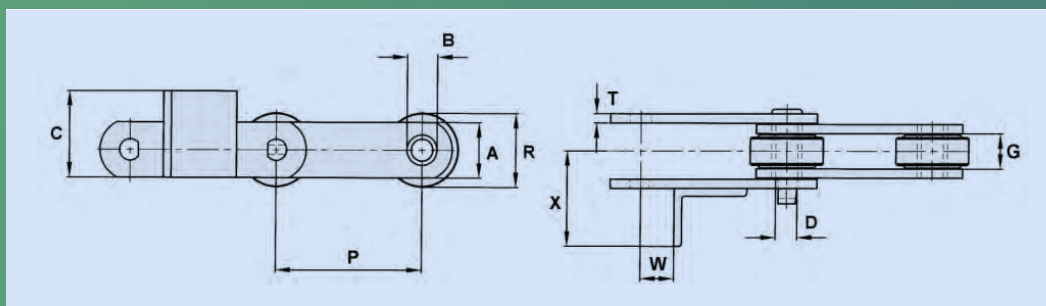
CHAIN No.	C	E	F	Bolt Diameter	T	W	X
				H			
603	1	1.75	2.81	0.38	0.25	5.38	6.88

BOILER CHAINS

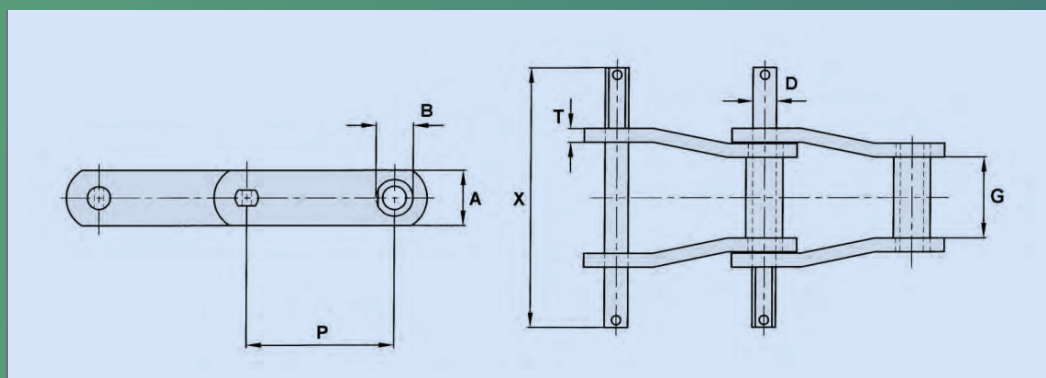
BOILER FEED - STEEL CHAIN



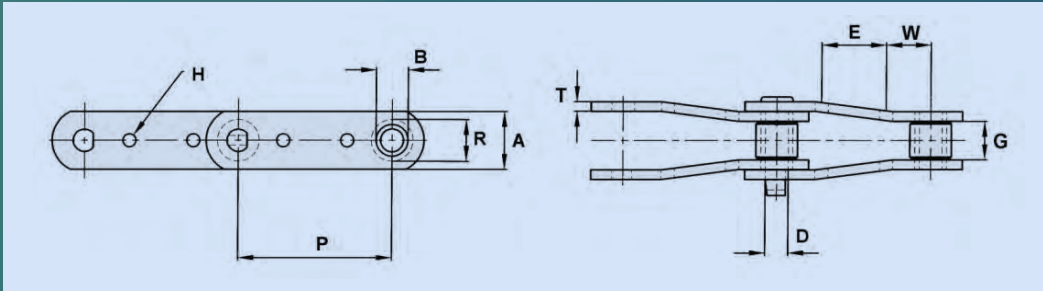
CHAIN No.	Pitch	Allow Load	UTS	Pin Dia.	Sidebar Depth	Max Gearing	Barrel Dia.	C	E	F	Bolt Dia.	T	W	X
	P			D	A	G	B				H			
E2103	3.075	4900	34000	0.75	1.5	1.38	1.25	2.09	3.5	4.88	0.38	0.25	0.63	2.75



CHAIN No.	Pitch	Allow Load	UTS	Pin Dia.	Roller Dia.	Sidebar Depth	Max Gearing	Barrel Dia.	C	T	W	X
	P			D	R	A	G	B				
B5051	3	2000	6000	0.51	1.13	25mm	0.69	0.79	1.5	4MM	0.61	2.44

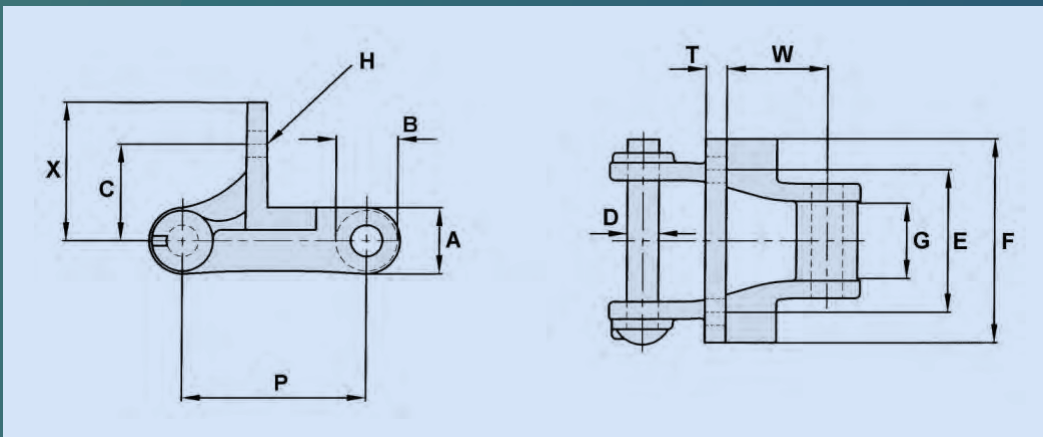


CHAIN No.	Pitch	Allow Load	UTS	Pin Diameter	Sidebar Depth	Maximum Gearing	Barrel Diameter	T	X
	P			D	A	G	B		
B5063	4	6300	50000	0.62	1.5	2.13	1	0.38	7.06
B5109	4	6400	67000	0.62	1.5	2.19	1	0.38	7.03



CHAIN No.	Pitch	Allow Load	UTS	Pin Dia.	Roller Dia.	Sidebar Depth	Max Gearing	Barrel Dia.	E	H	T	W
	P			D	R	A	G	B				
B5309	6	7100	45000	0.69	36mm	1.75	2.13	1	2.5	12mm	0.31	1.75
MXS2842	6.048	6600	40000	0.69	1.38	1.75	2.13	1.08	2.5	0.52	0.31	1.78

CAST PINTLE CHAIN



CHAIN No.	Pitch	Allow Load	UTS	Pin Dia.	B	C	E	F	Bolt Dia.	T	W	X
	P			D					H			
488F2	2.609	1800	11000	0.44	0.87	1.38	2.03	2.91	0.31	0.28	1.42	1.97







E W A R T

SINCE 1879

ALL ENQUIRIES

sales@ewartuk.com

www.ewartagriservices.com

Tel: +44 (0) 1332 227755